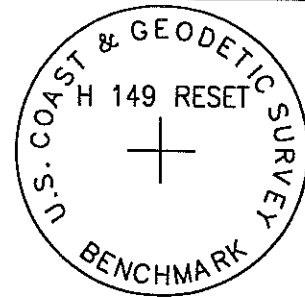


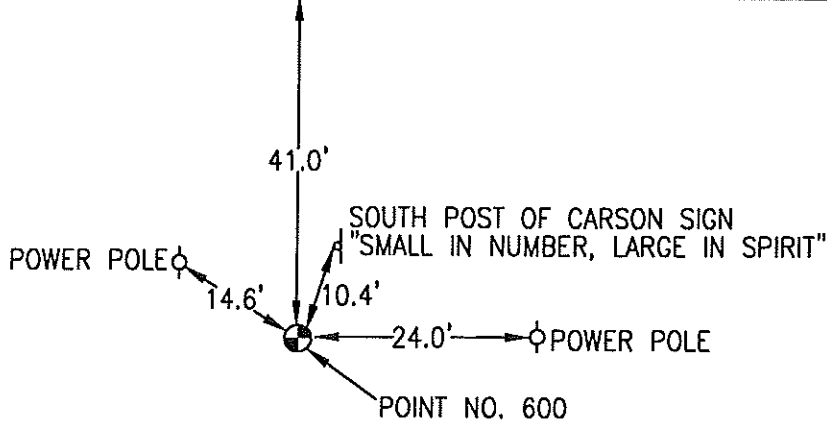
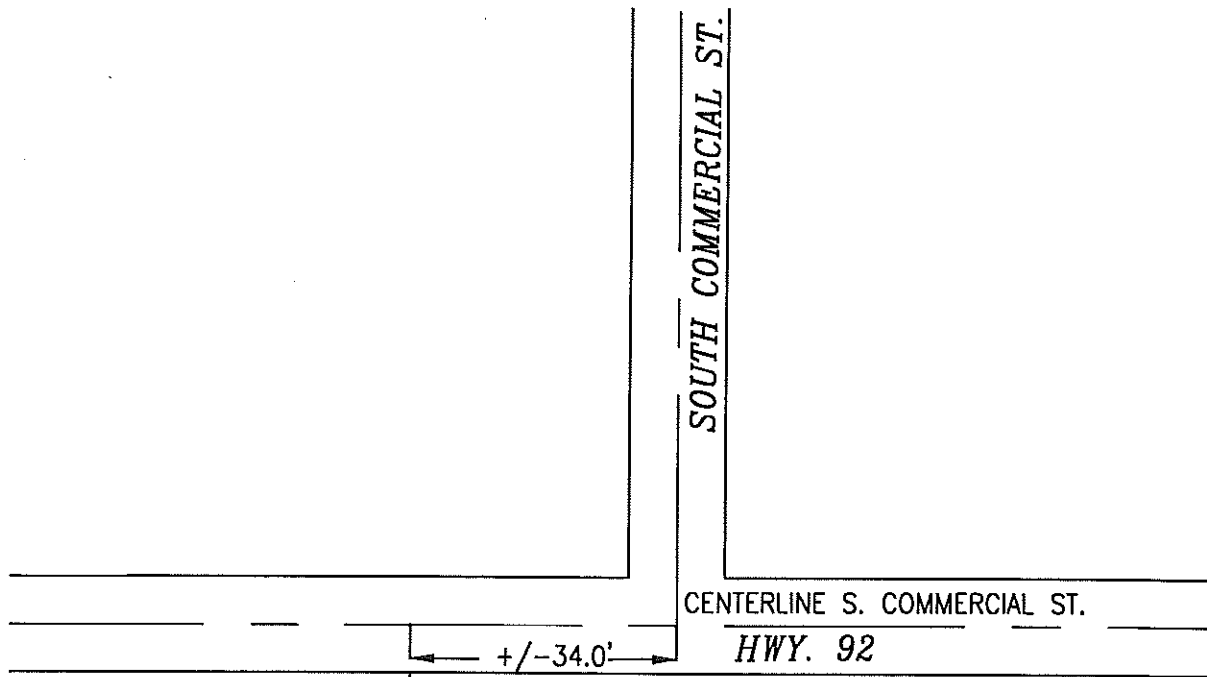
OK

600 H149RESET

FOUND A 3.5 INCH DIAMETER BRASS CAP IN CONCRETE, FLUSH WITH GROUND, STAMPED "H149 RESET 1955 U. S. COAST AND GEODETIC SURVEY BENCHMARK", LOCATED APPROXIMATELY 34 FEET WEST OF THE CENTERLINE EXTENDED OF SOUTH COMMERCIAL STREET, 41 FEET SOUTH OF THE SOUTH EDGE OF HIGHWAY 92, 24 FEET WEST OF A POWERPOLE, 14.6 FEET SOUTHEAST OF A POWERPOLE, 10.4 FEET SOUTH OF SOUTH POST OF "CARSON SMALL IN NUMBER, LARGE IN SPIRIT" SIGN. ON THE CARSON 7.5 MINUTE QUADRANGLE.



PT#	NAME OR DESIGNATION	GEODETIC NAD83 (1996)		HEIGHT ELLIPSOID METERS	SP NAD83 (1996) IOWA SOUTH HEIGHT			SP NAD83 (1996) IOWA SOUTH HEIGHT		
		LATITUDE (North) DEG MIN SEC	LONGITUDE (West) DEG MIN SEC		NORTHING METERS	EASTING METERS	NAVDB88 METERS	NORTHING US FEET	EASTING US FEET	NAVDB88 US FEET
600	H149RESET	41 13 57.50136	95 25 22.10741	297.65	138664.505	338815.808	325.44	454935.13	1111598.20	1067.7



NOT TO SCALE

LOCATION DIAGRAM  
POTTAWATTAMIE COUNTY IOWA  
GIS Mapping Project  
GPS Survey Report



**MERRICK**

Engineers & Architects

2450 S. Peoria Street Aurora, Colorado 80014 (303)751-0741

Job Number: 50013142

Date: November 4, 1998