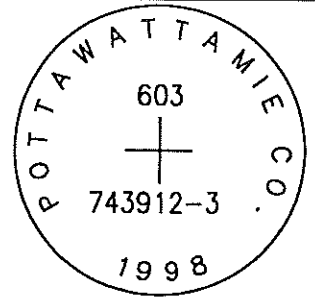
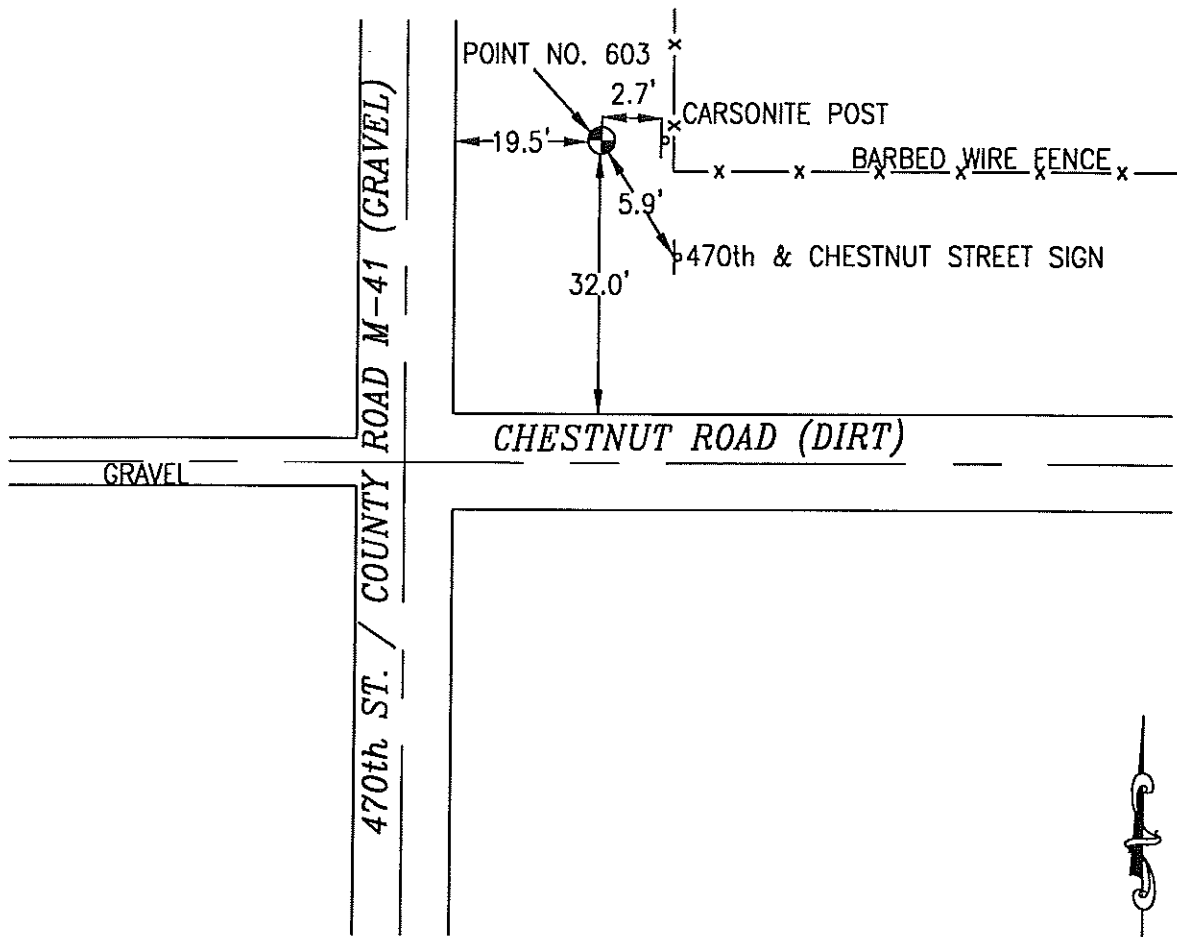


603 743912-3



SET 5/8 INCH DIAMETER ROD WITH 2.5 INCH DIAMETER CAP, 0.2 FEET BELOW GROUND, STAMPED "POTTAWATTAMIE CO. 1998, 603, 743912-3". LOCATED APPROXIMATELY 32 FEET NORTH OF THE NORTH EDGE OF CHESTNUT ROAD, 19.5 FEET EAST OF THE EAST EDGE OF 470TH STREET, 5.9 FEET NORTH OF A STREET INTERSECTION SIGN, 2.7 FEET WEST OF A ORANGE CARSONITE POST. ON THE CARSON NE 7.5 MINUTE QUADRANGLE.

PT#	NAME OR DESIGNATION	GEODETC NAD83 (1996)		HEIGHT ELLIPSOID METERS	SP NAD83 (1996) IOWA SOUTH HEIGHT			SP NAD83 (1996) IOWA SOUTH HEIGHT		
		LATITUDE (North) DEG MIN SEC	LONGITUDE (West) DEG MIN SEC		NORTHING METERS	EASTING METERS	NAVD88 METERS	NORTHING US FEET	EASTING US FEET	NAVD88 US FEET
603	743912-3	41 13 04.43862	95 17 20.04924	339.82	136788.481	350005.432	367.75	448780.21	1148309.49	1206.5



NOT TO SCALE

LOCATION DIAGRAM  
 POTTAWATTAMIE COUNTY IOWA  
 GIS Mapping Project  
 GPS Survey Report



**MERRICK**

Engineers & Architects

2450 S. Peoria Street Aurora, Colorado 80014 (303)751-0741

Job Number: 50013142

Date: November 4, 1998