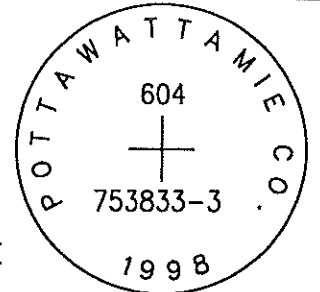


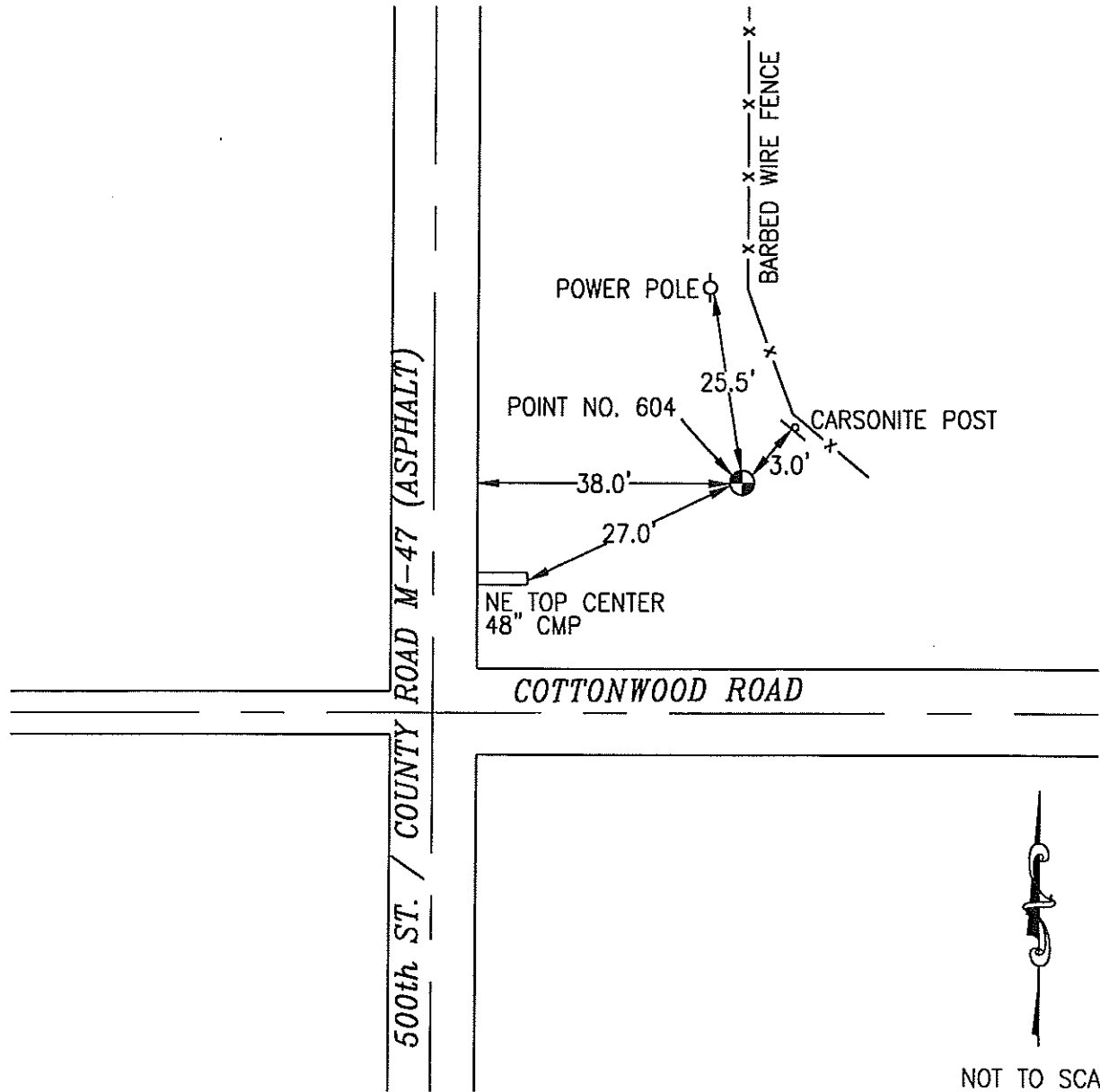
OK

604 753833-3

SET 5/8 INCH DIAMETER ROD WITH 2.5 INCH DIAMETER CAP, 0.5 FEET BELOW GROUND, STAMPED "POTTAWATTAMIE CO. 1998, 604, 753833-3". LOCATED APPROXIMATELY 38 FEET EAST OF THE EAST EDGE OF 500TH STREET (COUNTY ROAD M47), 27 FEET NORTHEAST OF THE TOP CENTER OF A 48 INCH DIAMETER CULVERT, 25.5 FEET SOUTH OF A POWERPOLE, 3 FEET SOUTHWEST OF A ORANGE CARSONITE POST. ON THE GRISWOLD 7.5 MINUTE QUADRANGLE.



PT#	NAME OR DESIGNATION	GEODETC NAD83 (1996)		HEIGHT ELLIPSOID METERS	SP NAD83 (1996) IOWA SOUTH HEIGHT			SP NAD83 (1996) IOWA SOUTH HEIGHT		
		LATITUDE (North) DEG MIN SEC	LONGITUDE (West) DEG MIN SEC		NORTHING METERS	EASTING METERS	NAVD88 METERS	NORTHING US FEET	EASTING US FEET	NAVD88 US FEET
604	753833-3	41 14 44.04396	95 13 55.21096	339.13	139763.935	354836.838	367.00	458542.18	1164160.53	1204.1



NOT TO SCALE

LOCATION DIAGRAM  
POTTAWATTAMIE COUNTY IOWA  
GIS Mapping Project  
GPS Survey Report

**MERRICK**  
Engineers & Architects  
2450 S. Pearl Street Aurora, Colorado 80014 (303)751-0741  
Job Number: 50013142  
Date: November 4, 1998