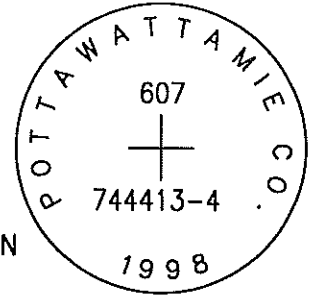


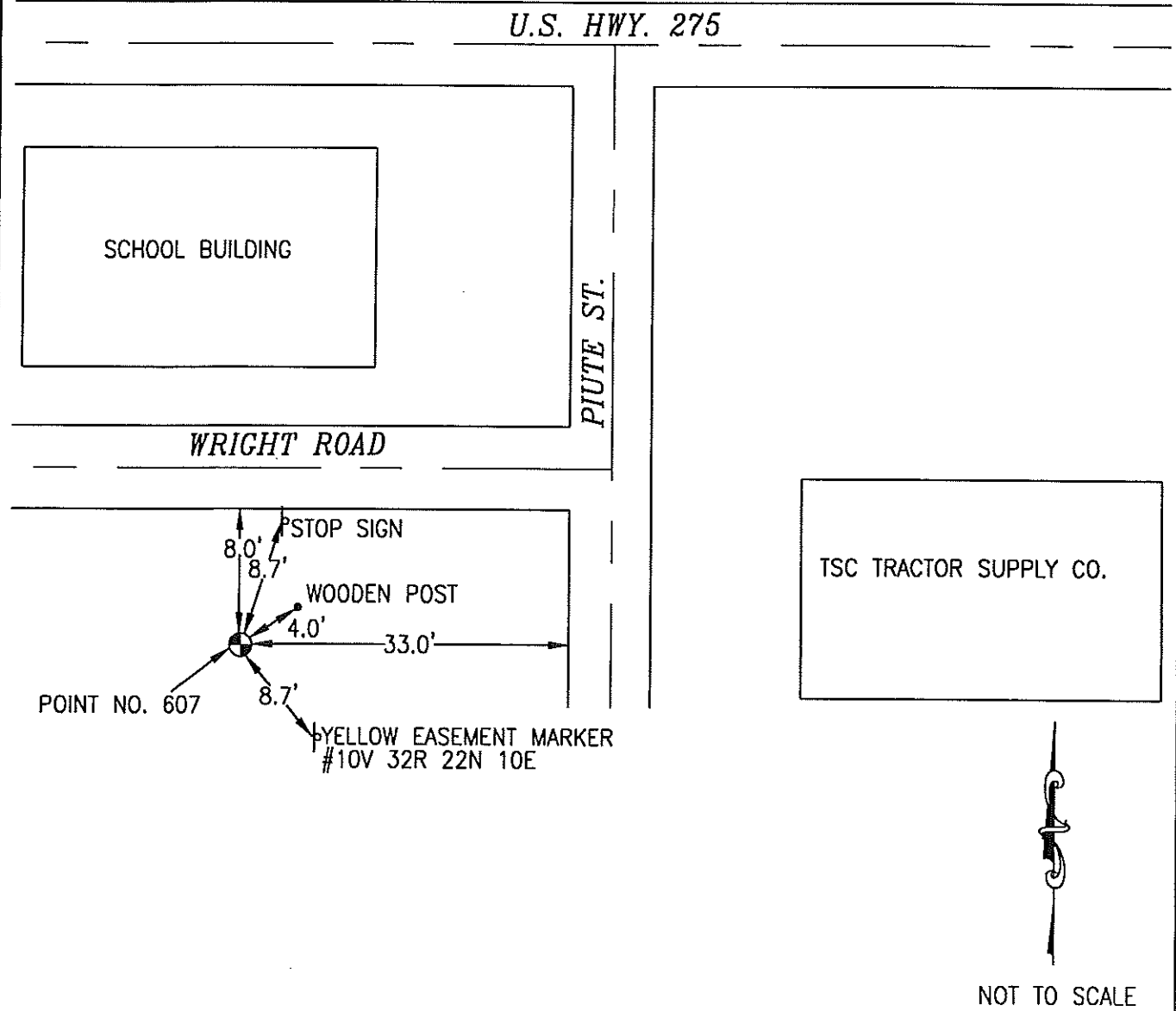
ok

607 744413-4



SET 5/8 INCH DIAMETER ROD WITH 2.5 INCH DIAMETER CAP, 0.4 FEET BELOW GROUND, STAMPED "POTTAWATTAMIE CO. 1998, 607, 744413-4". LOCATED APPROXIMATELY 8 FEET SOUTH OF THE SOUTH EDGE OF WRIGHT ROAD, 33 FEET WEST OF THE WEST EDGE OF PIUTE STREET, 8.7 FEET NORTHWEST OF YELLOW EASEMENT MARKER, 8.7 FEET SOUTH OF STOP SIGN, 4 FEET SOUTH OF A WOODEN POST. ON THE COUNCIL BLUFFS SOUTH 7.5 MINUTE QUADRANGLE.

PT#	NAME OR DESIGNATION	GEODETIC NAD83 (1996)		HEIGHT ELLIPSOID METERS	SP NAD83 (1996) IOWA SOUTH HEIGHT			SP NAD83 (1996) IOWA SOUTH HEIGHT		
		LATITUDE (North) DEG MIN SEC	LONGITUDE (West) DEG MIN SEC		NORTHING METERS	EASTING METERS	NAVD88 METERS	NORTHING US FEET	EASTING US FEET	NAVD88 US FEET
607	744413-4	41 13 05.23023	95 51 03.48903	269.89	137934.362	302888.454	297.32	452539.65	993726.54	975.5



NOT TO SCALE

LOCATION DIAGRAM
 POTTAWATTAMIE COUNTY IOWA
 GIS Mapping Project
 GPS Survey Report

MERRICK
 Engineers & Architects
 2450 S. Pearl Street Aurora, Colorado 80014 (303)751-0741
 Job Number: 50013142
 Date: November 4, 1998