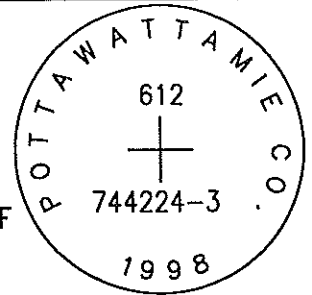


OK

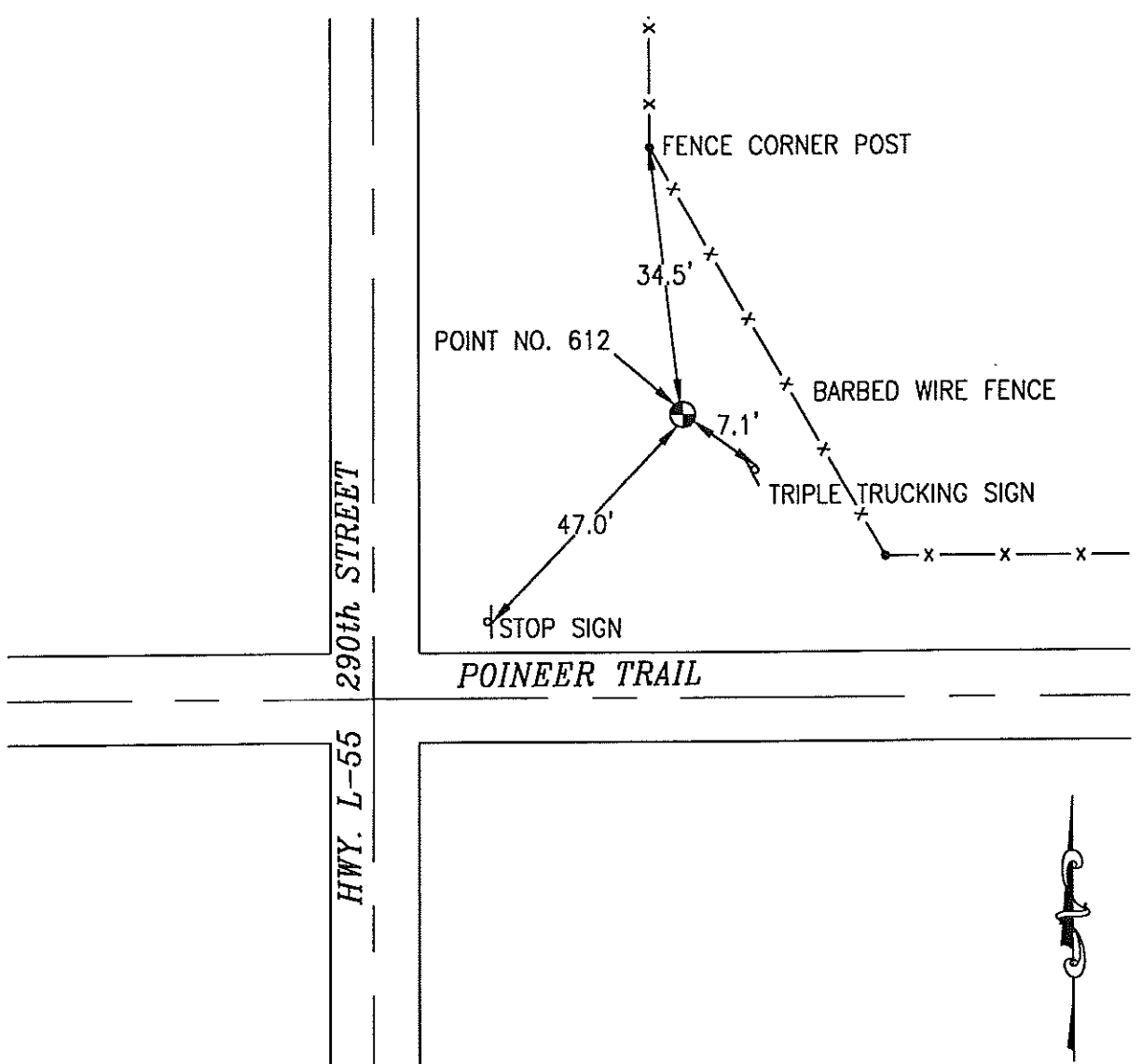
612

744224-3



SET 5/8 INCH DIAMETER ROD WITH 2.5 INCH DIAMETER CAP, 0.3 FEET BELOW GROUND, STAMPED "POTTAWATTAMIE CO. 1998, 612, 744224-3". LOCATED APPROXIMATELY AT THE NORTHEAST CORNER OF PIONEER TRAIL AND HIGHWAY L55 (290TH STREET), 47 FEET NORTHEAST OF STOP SIGN, 7.1 FEET NORTHWEST OF "TRIPLE TRUCKING" SIGN, 34.5 FEET SOUTHEAST OF FENCE ANGLE POINT. ON THE MINEOLA 7.5 MINUTE QUADRANGLE.

PT#	NAME OR DESIGNATION	GEODETIC NAD83 (1996)		HEIGHT ELLIPSOID METERS	SP NAD83 (1996) IOWA SOUTH HEIGHT			SP NAD83 (1996) IOWA SOUTH HEIGHT		
		LATITUDE (North) DEG MIN SEC	LONGITUDE (West) DEG MIN SEC		NORTHING METERS	EASTING METERS	NAVD88 METERS	NORTHING US FEET	EASTING US FEET	NAVD88 US FEET
612	744224-3	41 11 21.59242	95 37 54.96325	337.64	134265.090	321170.715	365.24	440501.38	1053707.59	1198.3



NOT TO SCALE

LOCATION DIAGRAM  
 POTTAWATTAMIE COUNTY IOWA  
 GIS Mapping Project  
 GPS Survey Report



**MERRICK**

Engineers & Architects

2450 S. Peoria Street Aurora, Colorado 80014 (303)751-0741

Job Number: 50013142

Date: November 4, 1998