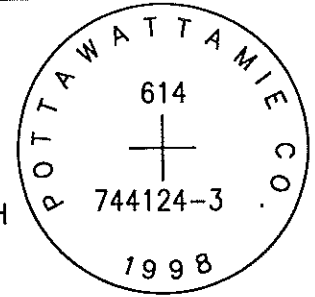


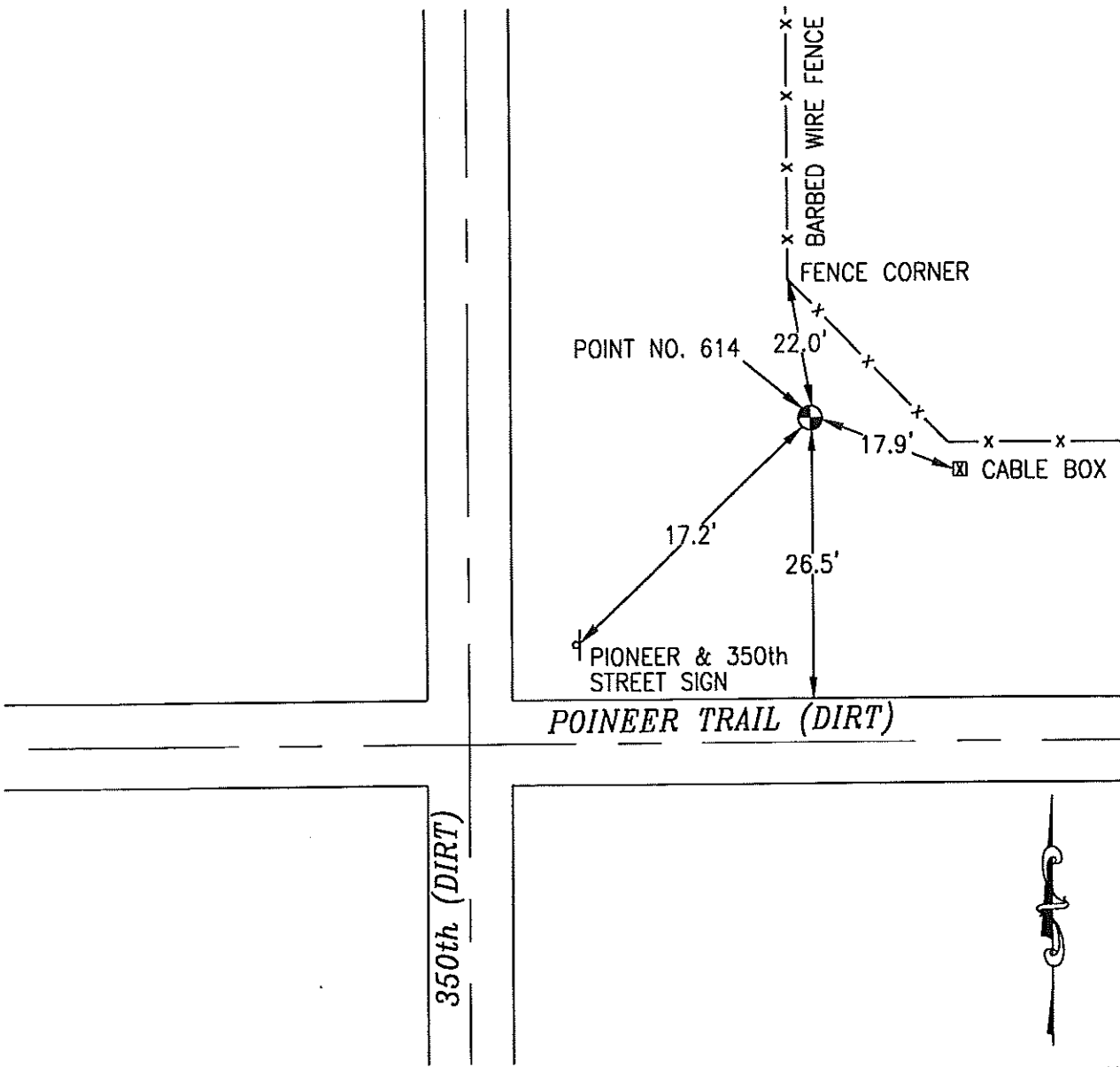
OK

614 744124-3



SET 5/8 INCH DIAMETER ROD WITH 2.5 INCH DIAMETER CAP, 0.1 FEET BELOW GROUND, STAMPED "POTTAWATTAMIE CO. 1998, 614, 744124-3". LOCATED APPROXIMATELY 26.5 FEET NORTH OF THE NORTH EDGE OF PIONEER TRAIL, 17.2 FEET NORTHEAST OF A STREET INTERSECTION SIGN, ON THE EAST SIDE OF 350TH STREET, 17.9 FEET NORTHWEST OF A CABLE BOX, 22 FEET SOUTHEAST OF A FENCE ANGLE POINT. ON THE TREYNOR 7.5 MINUTE QUADRANGLE.

PT#	NAME OR DESIGNATION	GEODEIC NAD83 (1996)		HEIGHT ELLIPSOID METERS	SP NAD83 (1996) IOWA SOUTH		HEIGHT NAVD88 METERS	SP NAD83 (1996) IOWA SOUTH		HEIGHT NAVD88 US FEET
		LATITUDE (North) DEG MIN SEC	LONGITUDE (West) DEG MIN SEC		NORTHING METERS	EASTING METERS		NORTHING US FEET	EASTING US FEET	
614	744124-3	41 11 21.47118	95 31 05.11620	329.34	134033.538	330718.442	357.10	439741.70	1085032.09	1171.6



NOT TO SCALE

LOCATION DIAGRAM
 POTTAWATTAMIE COUNTY IOWA
 GIS Mapping Project
 GPS Survey Report

MERRICK
 Engineers & Architects
 2450 S. Peoria Street Aurora, Colorado 80014 (303)751-0741
 Job Number: 50013142
 Date: November 4, 1998