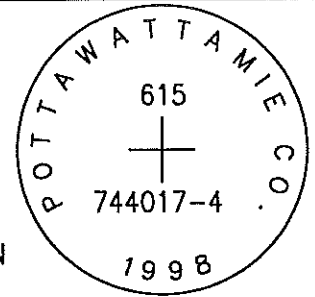


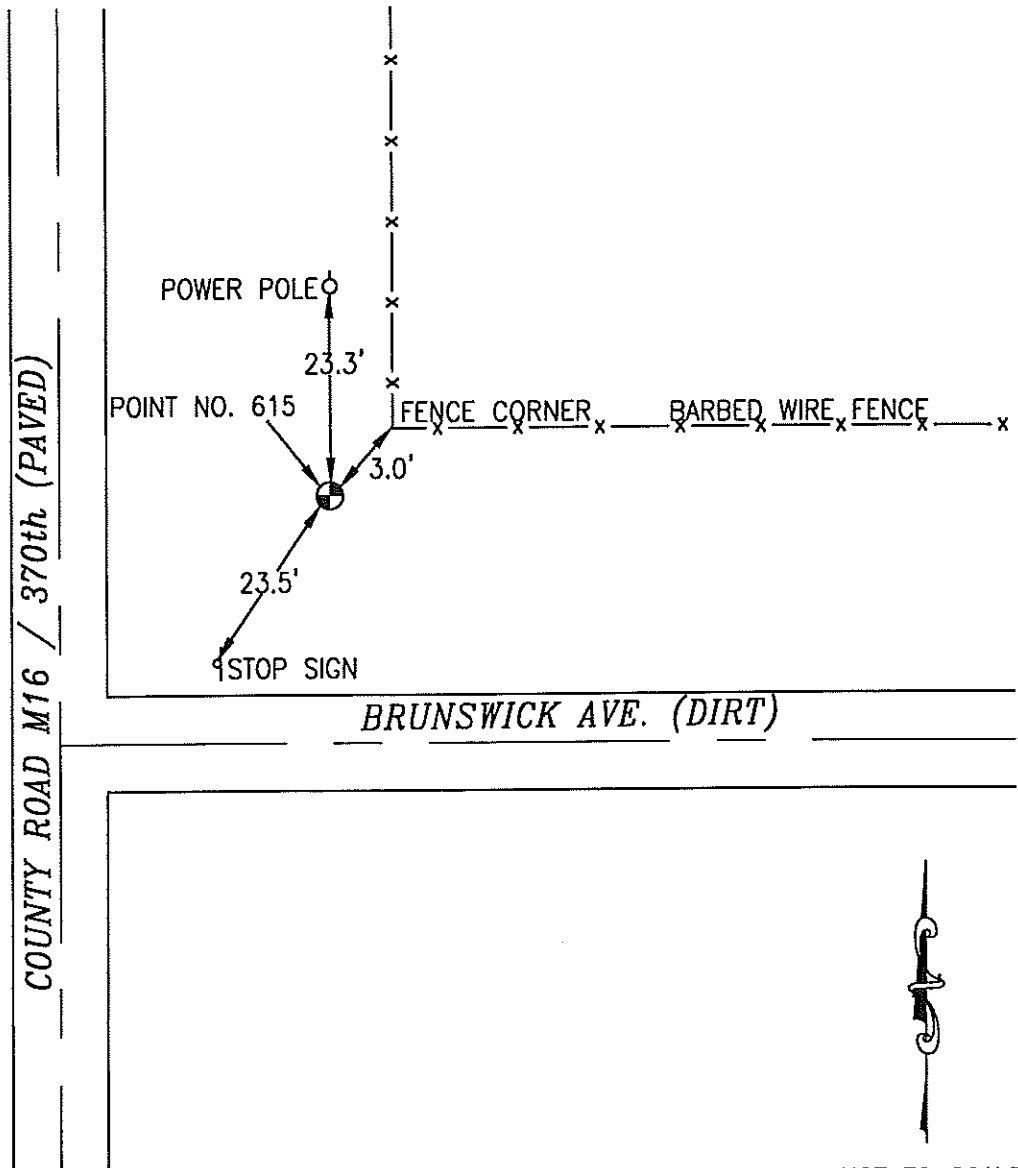
M 1/ be under 2 foot dirt

615 744017-4

SET 5/8 INCH DIAMETER ROD WITH 2.5 INCH DIAMETER CAP, 0.2 FEET BELOW GROUND, STAMPED "POTTAWATTAMIE CO. 1998, 615, 744017-4". LOCATED APPROXIMATELY AT THE NORTHEAST CORNER OF COUNTY ROAD M16 (370TH STREET), AND BRUNSWICK AVENUE, 23.5 FEET NORTHEAST OF A STOP SIGN, 3 FEET SOUTHEAST OF A FENCE CORNER, 23.3 FEET SOUTH OF A POWERPOLE. ON THE CARSON 7.5 MINUTE QUADRANGLE.



PT#	NAME OR DESIGNATION	GEODETIC NAD83 (1996)		HEIGHT ELLIPSOID METERS	SP NAD83 (1996) IOWA SOUTH HEIGHT					
		LATITUDE (North) DEG MIN SEC	LONGITUDE (West) DEG MIN SEC		NORTHING METERS	EASTING METERS	NAV88 METERS			
615	744017-4	41 12 39.90584	95 28 49.79028	337.30	136379.971	333926.152	365.05	447439.95	1095556.05	1197.7



NOT TO SCALE

LOCATION DIAGRAM
 POTTAWATTAMIE COUNTY IOWA
 GIS Mapping Project
 GPS Survey Report

MERRICK
 Engineers & Architects
 2450 S. Pearl Street Aurora, Colorado 80014 (303)751-0741
 Job Number: 50013142
 Date: November 4, 1998