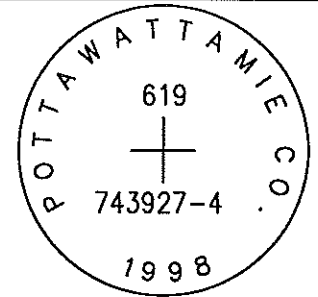


OK

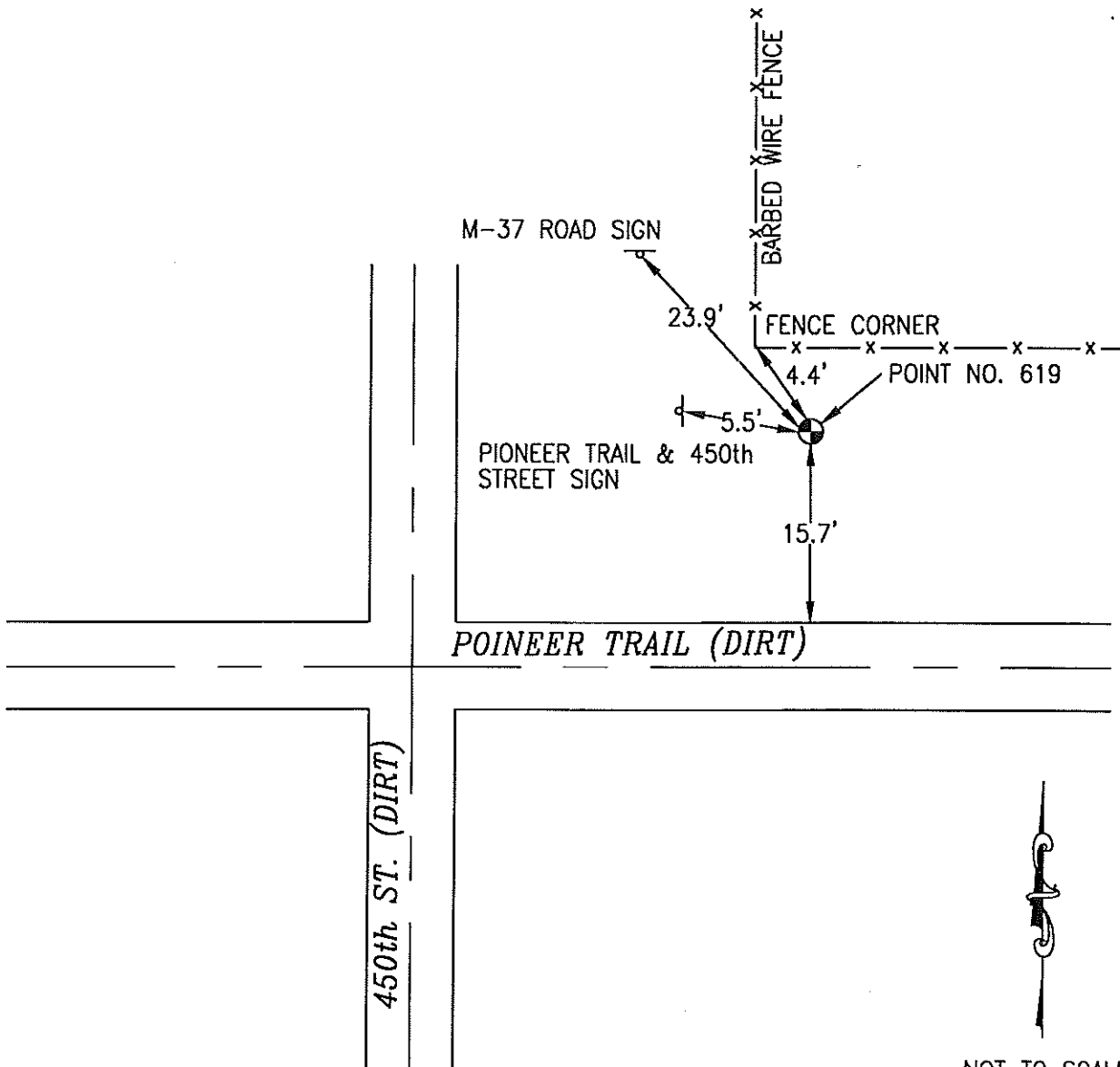
619

743927-4



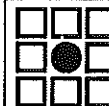
SET 5/8 INCH DIAMETER ROD WITH 2.5 INCH DIAMETER CAP, 0.3 FEET BELOW GROUND, STAMPED "POTTAWATTAMIE CO. 1998, 619, 743927-4". LOCATED APPROXIMATELY 15.7 FEET NORTH OF THE NORTH EDGE OF PIONEER TRAIL ON THE EAST SIDE OF 450TH STREET, 23.9 FEET SOUTHEAST OF ROAD SIGN (M37), 4.4 FEET SOUTH OF CORNER OF BARBED WIRE FENCE, 5.5 FEET EAST OF A STREET INTERSECTION SIGN. ON THE CARSON NE 7.5 MINUTE QUADRANGLE.

PT#	NAME OR DESIGNATION	GEODETTIC NAD83 (1996)			HEIGHT ELLIPSOID METERS	SP NAD83 (1996) IOWA SOUTH HEIGHT			SP NAD83 (1996) IOWA SOUTH HEIGHT					
		LATITUDE (North)		LONGITUDE (West)		NORTHING METERS	EASTING METERS	NAV88 METERS	NORTHING US FEET	EASTING US FEET	NAV88 US FEET			
		DEG	MIN	SEC		DEG	MIN	SEC	METERS	METERS	METERS	US FEET	US FEET	US FEET
619	743927-4	41	11	06.85467	95	19	38.56395	345.94	133229.137	346703.572	373.94	437102.59	1137476.64	1226.8



NOT TO SCALE

LOCATION DIAGRAM
 POTTAWATTAMIE COUNTY IOWA
 GIS Mapping Project
 GPS Survey Report



MERRICK

Engineers & Architects

2450 S. Pearl Street Aurora, Colorado 80014 (303)751-0741

Job Number: 50013142

Date: November 4, 1998