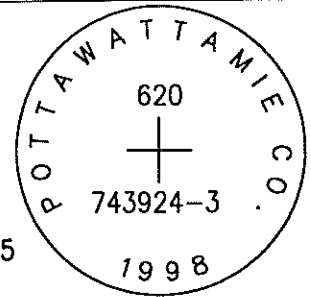


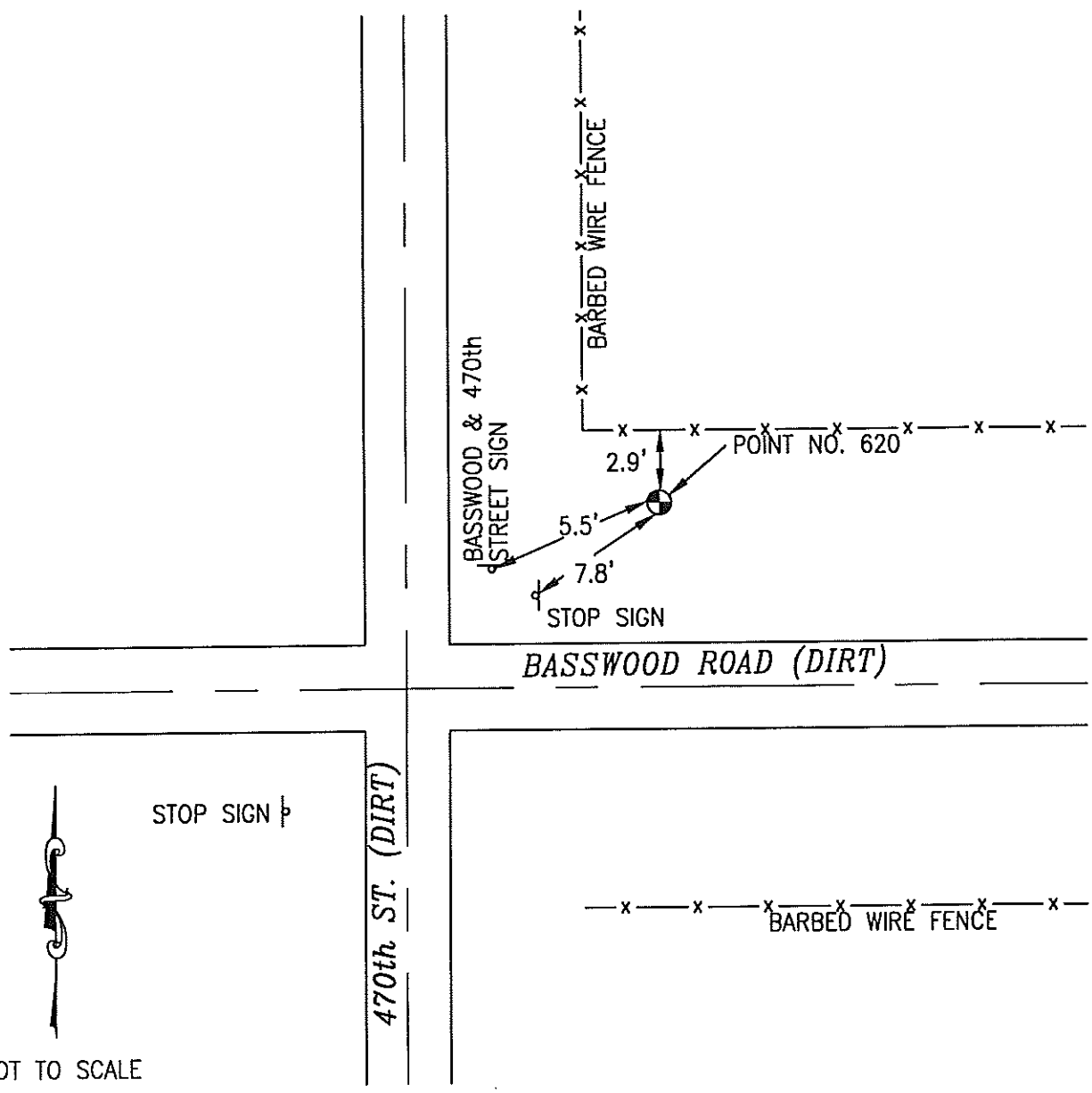
OK

620 743924-3

SET 5/8 INCH DIAMETER ROD WITH 2.5 INCH DIAMETER CAP, 0.1 FEET BELOW GROUND, STAMPED "POTTAWATTAMIE CO. 1998, 620, 743924-3". LOCATED APPROXIMATELY AT THE NORTHEAST CORNER OF 470TH STREET AND BASSWOOD ROAD, 5.5 FEET EAST OF A STREET INTERSECTION SIGN, 7.8 FEET NORTH OF A STOP SIGN, 2.9 FEET SOUTH OF A BARBED WIRE FENCE. ON THE CARSON NE 7.5 MINUTE QUADRANGLE.



PT#	NAME OR DESIGNATION	GEODETTIC NAD83 (1996)		HEIGHT ELLIPSOID METERS	SP NAD83 (1996) IOWA SOUTH HEIGHT			SP NAD83 (1996) IOWA SOUTH HEIGHT		
		LATITUDE (North) DEG MIN SEC	LONGITUDE (West) DEG MIN SEC		NORTHING METERS	EASTING METERS	NAVD88 METERS	NORTHING US FEET	EASTING US FEET	NAVD88 US FEET
620	743924-3	41 11 19.35469	95 17 20.31918	343.62	133547.686	349932.480	371.66	438147.70	1148070.14	1219.4



LOCATION DIAGRAM  
 POTTAWATTAMIE COUNTY IOWA  
 GIS Mapping Project  
 GPS Survey Report

**MERRICK**  
 Engineers & Architects  
 2450 S. Peoria Street Aurora, Colorado 80014 (303)751-0741  
 Job Number: 50013142  
 Date: November 4, 1998