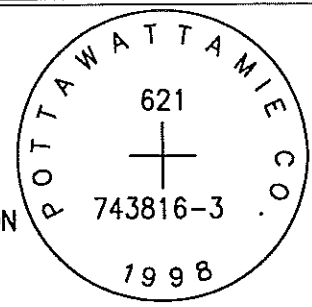


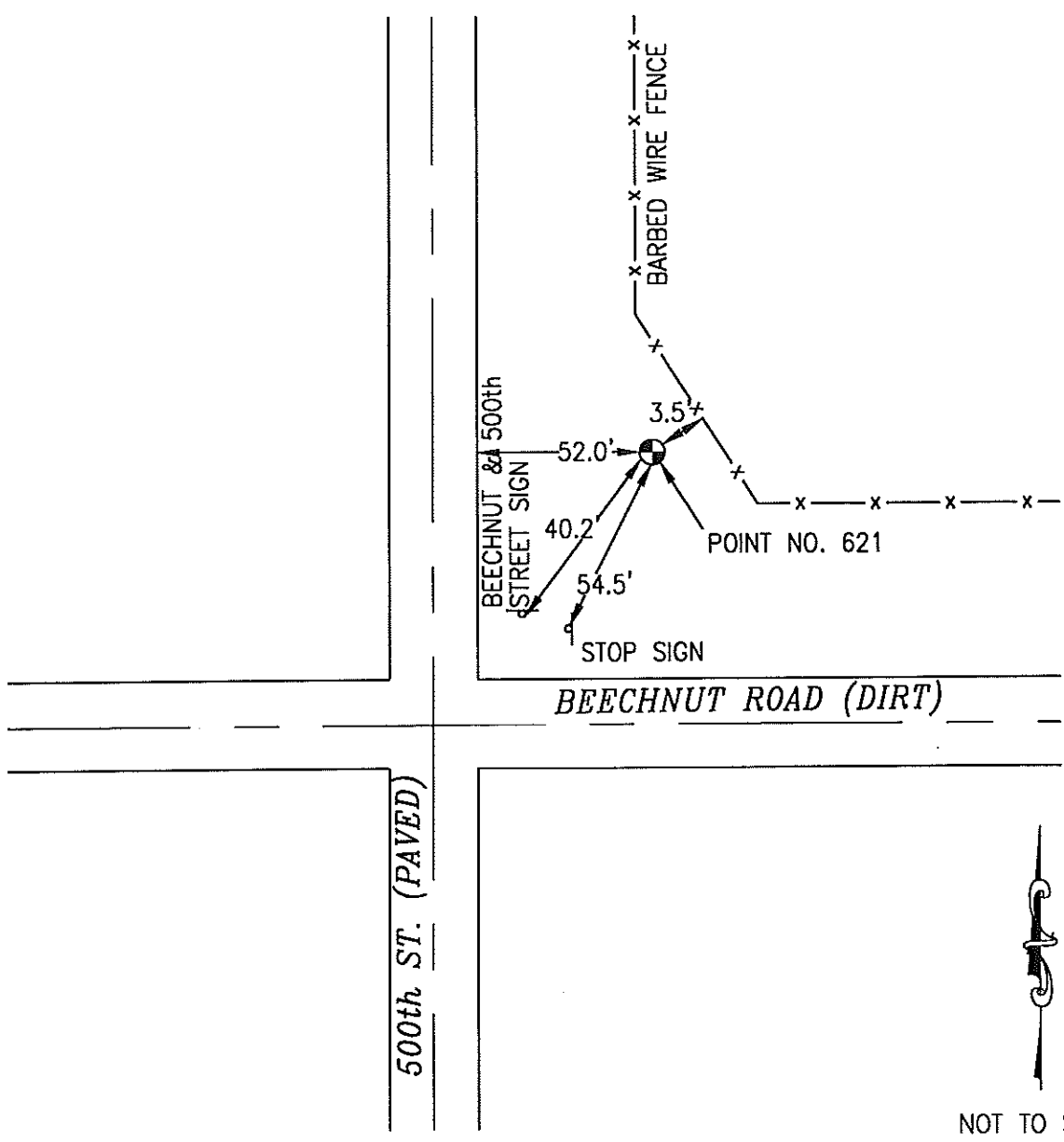
dk

621 743816-3

SET 5/8 INCH DIAMETER ROD WITH 2.5 INCH DIAMETER CAP, 0.3 FEET BELOW GROUND, STAMPED "POTTAWATTAMIE CO. 1998, 621, 743816-3". LOCATED APPROXIMATELY 52 FEET EAST OF THE EAST EDGE OF 500TH STREET, ON THE NORTH SIDE OF BEECHNUT ROAD, 40.2 FEET NORTHEAST OF STREET INTERSECTION SIGN, 54.5 FEET NORTH OF STOP SIGN, 3.5 FEET SOUTHWEST OF A FENCE. ON THE GRISWOLD 7.5 MINUTE QUADRANGLE.



PT#	NAME OR DESIGNATION	GEODETTIC NAD83 (1996)			HEIGHT ELLIPSOID METERS	SP NAD83 (1996) IOWA SOUTH HEIGHT			SP NAD83 (1996) IOWA SOUTH HEIGHT		
		LATITUDE (North) DEG MIN SEC	LONGITUDE (West) DEG MIN SEC	NORTHING METERS		EASTING METERS	NAV88 METERS	NORTHING US FEET	EASTING US FEET	NAV88 US FEET	
621	743816-3	41 12 11.37166	95 13 55.68837	330.50	135055.470	354731.945	358.56	443094.49	1163816.39	1176.4	



NOT TO SCALE

LOCATION DIAGRAM
POTTAWATTAMIE COUNTY IOWA
GIS Mapping Project
GPS Survey Report

MERRICK
Engineers & Architects
2450 S. Peoria Street Aurora, Colorado 80014 (303)751-0741
Job Number: 50013142
Date: November 4, 1998