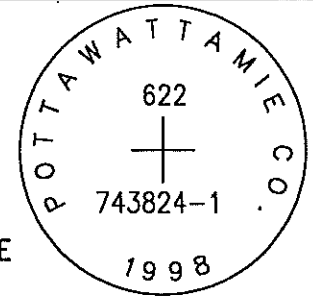


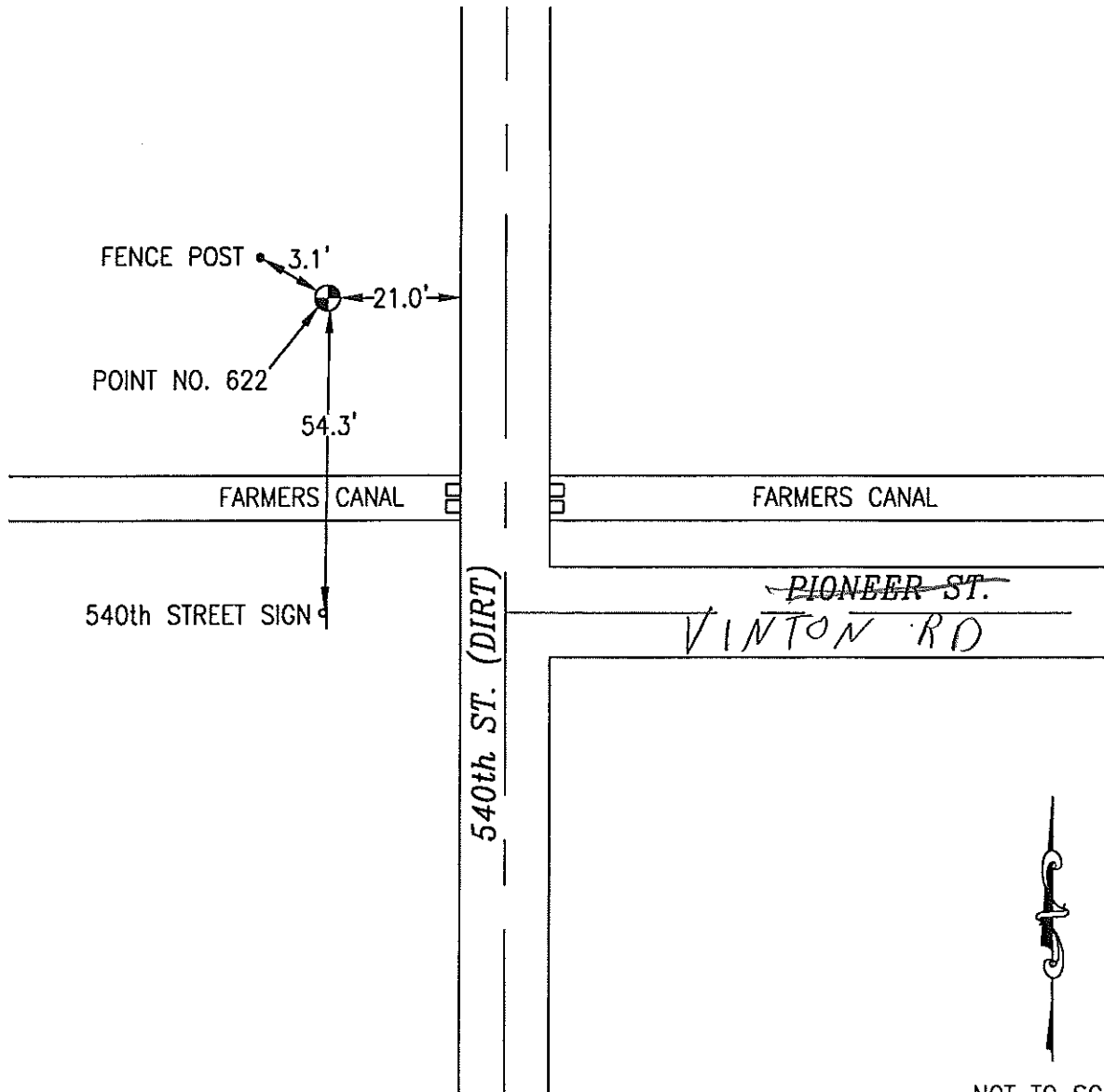
540 ST of Vinton Road

622 743824-1

SET 5/8 INCH DIAMETER ROD WITH 2.5 INCH DIAMETER CAP, 0.3 FEET BELOW GROUND, STAMPED "POTTAWATTAMIE CO. 1998, 622, 743824-1". LOCATED APPROXIMATELY 21 FEET WEST OF THE WEST EDGE OF 540TH STREET, ON THE NORTH SIDE OF A FARMERS CANAL, 54.3 FEET NORTH OF A STREET SIGN (540TH), 3.1 FEET SOUTHEAST OF A FENCE POST. ON THE GRISWOLD 7.5 MINUTE QUADRANGLE.



PT#	NAME OR DESIGNATION	GEODETC NAD83 (1996)			HEIGHT ELLIPSOID METERS	SP NAD83 (1996) IOWA SOUTH HEIGHT			SP NAD83 (1996) IOWA SOUTH HEIGHT		
		LATITUDE (North) DEG MIN SEC	LONGITUDE (West) DEG MIN SEC			NORTHING METERS	EASTING METERS	NAVD88 METERS	NORTHING US FEET	EASTING US FEET	NAVD88 US FEET
622	743824-1	41 11 44.20010	95 9 20.84518	300.12	134092.743	361118.011	328.38	439935.94	1184768.01	1077.4	



NOT TO SCALE

LOCATION DIAGRAM
 POTTAWATTAMIE COUNTY IOWA
 GIS Mapping Project
 GPS Survey Report



MERRICK

Engineers & Architects

2450 S. Peoria Street Aurora, Colorado 80014 (303)751-0741

Job Number: 50013142

Date: November 4, 1998