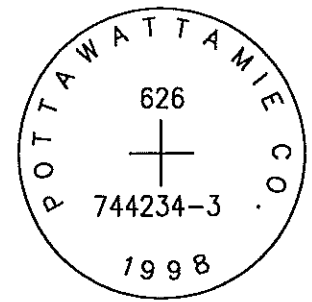


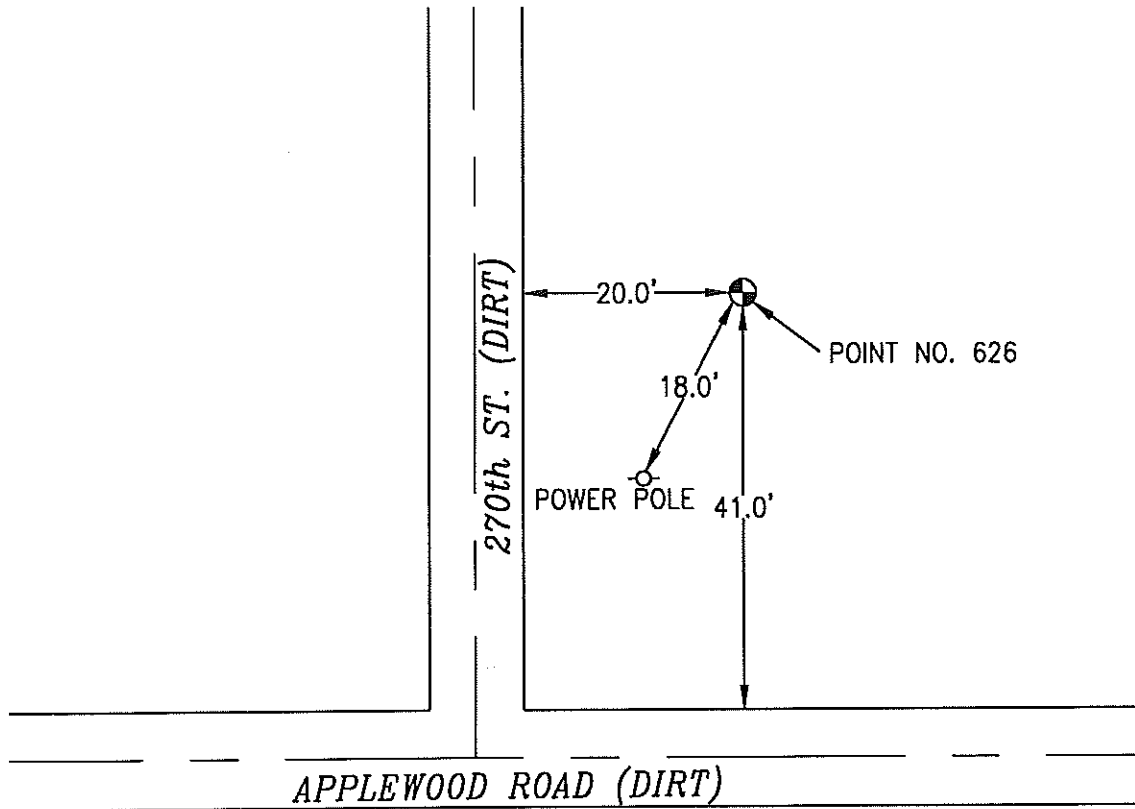
ok

626 744234-3

SET 5/8 INCH DIAMETER ROD WITH 2.5 INCH DIAMETER CAP, 0.2 FEET BELOW GROUND, STAMPED "POTTAWATTAMIE CO. 1998, 626, 744234-3". LOCATED APPROXIMATELY 20 FEET EAST OF THE EAST EDGE OF 270TH STREET, 41 FEET NORTH OF THE NORTH EDGE OF APPLEWOOD ROAD, 18 FEET NORTH OF A POWERPOLE. ON THE MINEOLA 7.5 MINUTE QUADRANGLE.

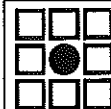


PT#	NAME OR DESIGNATION	GEODETIC NAD83 (1996)		HEIGHT ELLIPSOID METERS	SP NAD83 (1996) IOWA SOUTH HEIGHT			SP NAD83 (1996) IOWA SOUTH HEIGHT		
		LATITUDE (North) DEG MIN SEC	LONGITUDE (West) DEG MIN SEC		NORTHING METERS	EASTING METERS	NAVD88 METERS	NORTHING US FEET	EASTING US FEET	NAVD88 US FEET
626	744234-3	41 09 36.79949	95 40 12.99201	311.79	131113.011	317874.610	339.39	430159.94	1042893.62	1113.5



NOT TO SCALE

LOCATION DIAGRAM
 POTTAWATTAMIE COUNTY IOWA
 GIS Mapping Project
 GPS Survey Report



MERRICK

Engineers & Architects

2450 S. Peoria Street Aurora, Colorado 80014 (303)751-0741

Job Number: 50013142

Date: November 4, 1998