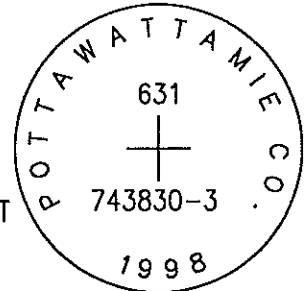


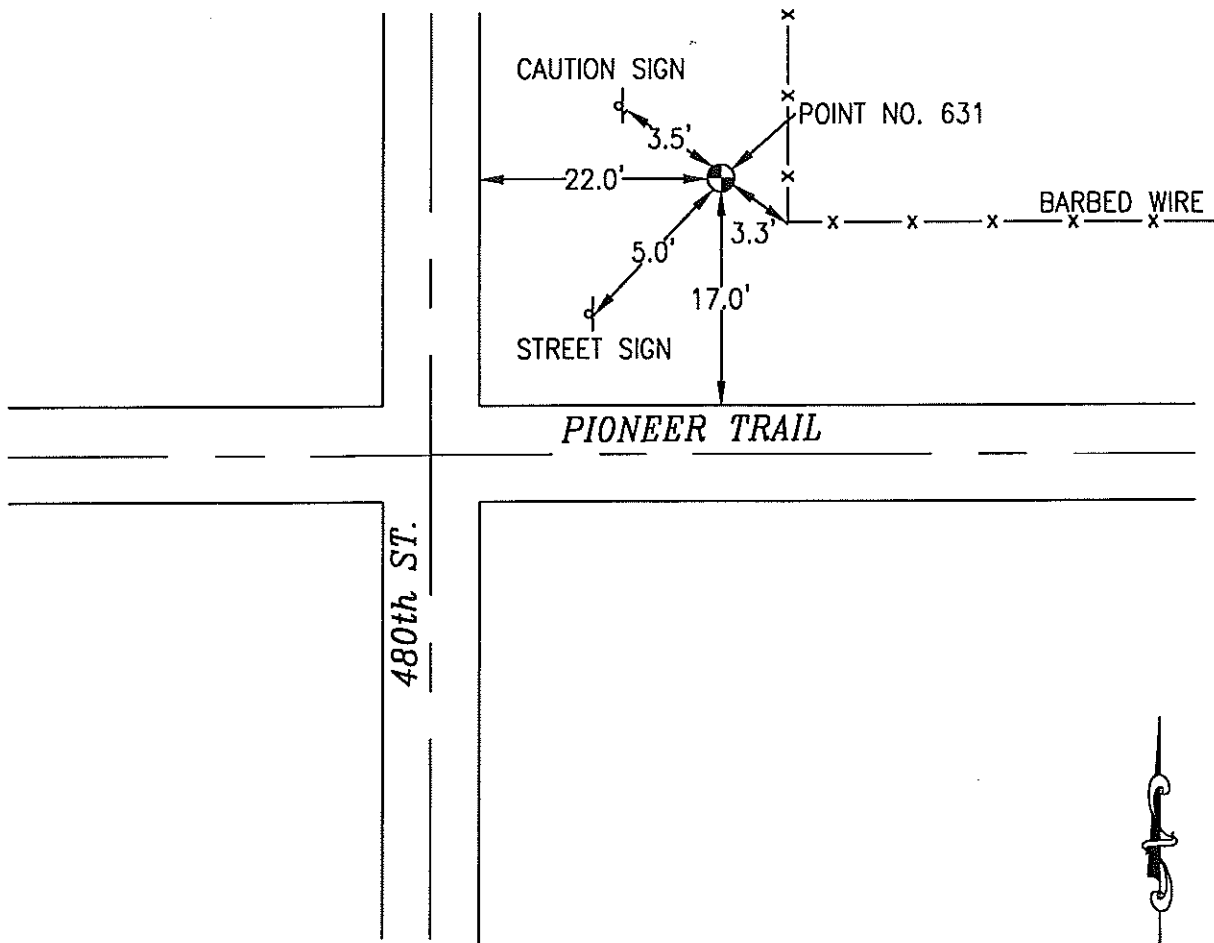
OK

631 743830-3

SET 5/8 INCH DIAMETER ROD WITH 2.5 INCH DIAMETER CAP, 0.4 FEET BELOW GROUND, STAMPED "POTTAWATTAMIE CO. 1998, 631, 743830-3". LOCATED APPROXIMATELY 22 FEET EAST OF THE EAST EDGE OF 480TH STREET, 17 FEET NORTH OF THE NORTH EDGE OF PIONEER TRAIL, 5 FEET NORTHEAST OF A STREET SIGN, 3.5 FEET SOUTHWEST OF A CAUTION SIGN, 3.3 FEET NORTHWEST OF A FENCE CORNER. ON THE CARSON NE 7.5 MINUTE QUADRANGLE.

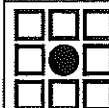


PT#	NAME OR DESIGNATION	GEODETTIC NAD83 (1996)		HEIGHT ELLIPSOID METERS	SP NAD83 (1996) IOWA SOUTH			SP NAD83 (1996) IOWA SOUTH		
		LATITUDE (North) DEG MIN SEC	LONGITUDE (West) DEG MIN SEC		NORTHING METERS	EASTING METERS	HEIGHT NAVD88 METERS	NORTHING US FEET	EASTING US FEET	HEIGHT NAVD88 US FEET
631	743830-3	41 10 26.86028	95 16 11.27933	364.73	131895.781	351508.027	392.88	432728.07	1153239.25	1289.0



NOT TO SCALE

LOCATION DIAGRAM
 POTTAWATTAMIE COUNTY IOWA
 GIS Mapping Project
 GPS Survey Report



MERRICK

Engineers & Architects

2450 S. Peoria Street Aurora, Colorado 80014 (303)751-0741

Job Number: 50013142

Date: November 4, 1998