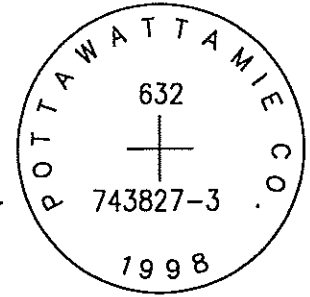


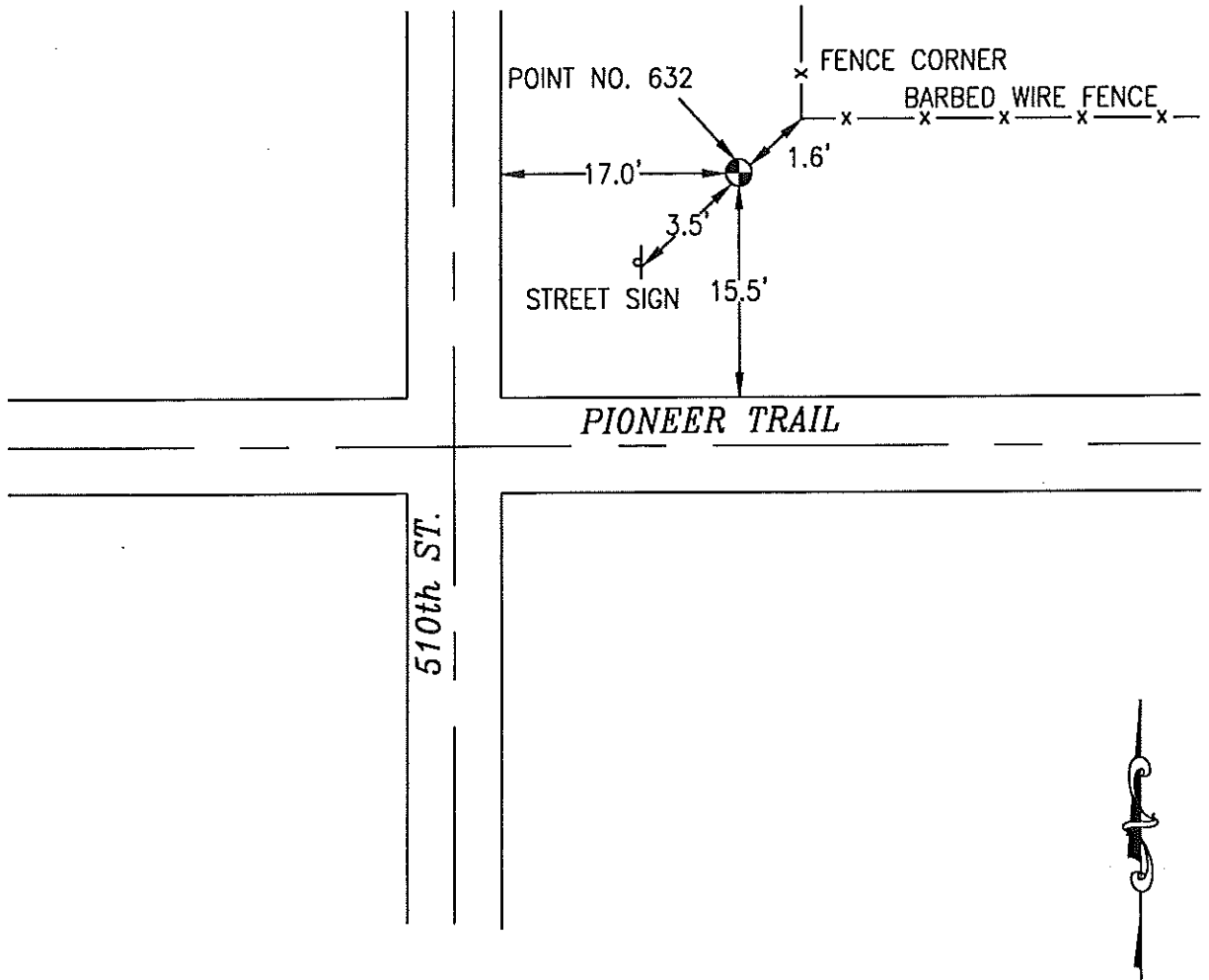
OK

632 743827-3



SET 5/8 INCH DIAMETER ROD WITH 2.5 INCH DIAMETER CAP, 0.5 FEET BELOW GROUND, STAMPED "POTTAWATTAMIE CO. 1998, 632, 743827-3". LOCATED APPROXIMATELY 17 FEET EAST OF THE EAST EDGE OF 510TH STREET, 15.5 FEET NORTH OF THE NORTH EDGE OF PIONEER TRAIL, 3.5 FEET NORTHEAST OF STREET SIGN, 1.6 FEET SOUTHWEST OF FENCE CORNER. ON THE GRISWOLD 7.5 MINUTE QUADRANGLE.

PT.#	NAME OR DESIGNATION	GEODEIC NAD83 (1996)		HEIGHT ELLIPSOID METERS	SP NAD83 (1996) IOWA SOUTH HEIGHT			SP NAD83 (1996) IOWA SOUTH HEIGHT		
		LATITUDE (North) DEG MIN SEC	LONGITUDE (West) DEG MIN SEC		NORTHING METERS	EASTING METERS	NAV88 METERS	NORTHING US FEET	EASTING US FEET	NAV88 US FEET
632	743827-3	41 10 26.08466	95 12 46.73312	348.19	131776.420	356274.177	376.46	432336.47	1168876.20	1235.1



NOT TO SCALE

LOCATION DIAGRAM
 POTTAWATTAMIE COUNTY IOWA
 GIS Mapping Project
 GPS Survey Report

MERRICK
 Engineers & Architects
 2450 S. Peoria Street Aurora, Colorado 80014 (303)751-0741
 Job Number: 50013142
 Date: November 5, 1998