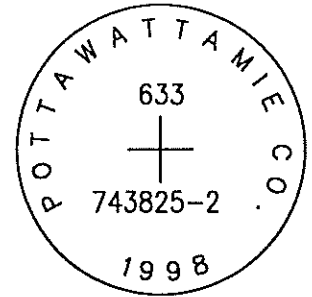


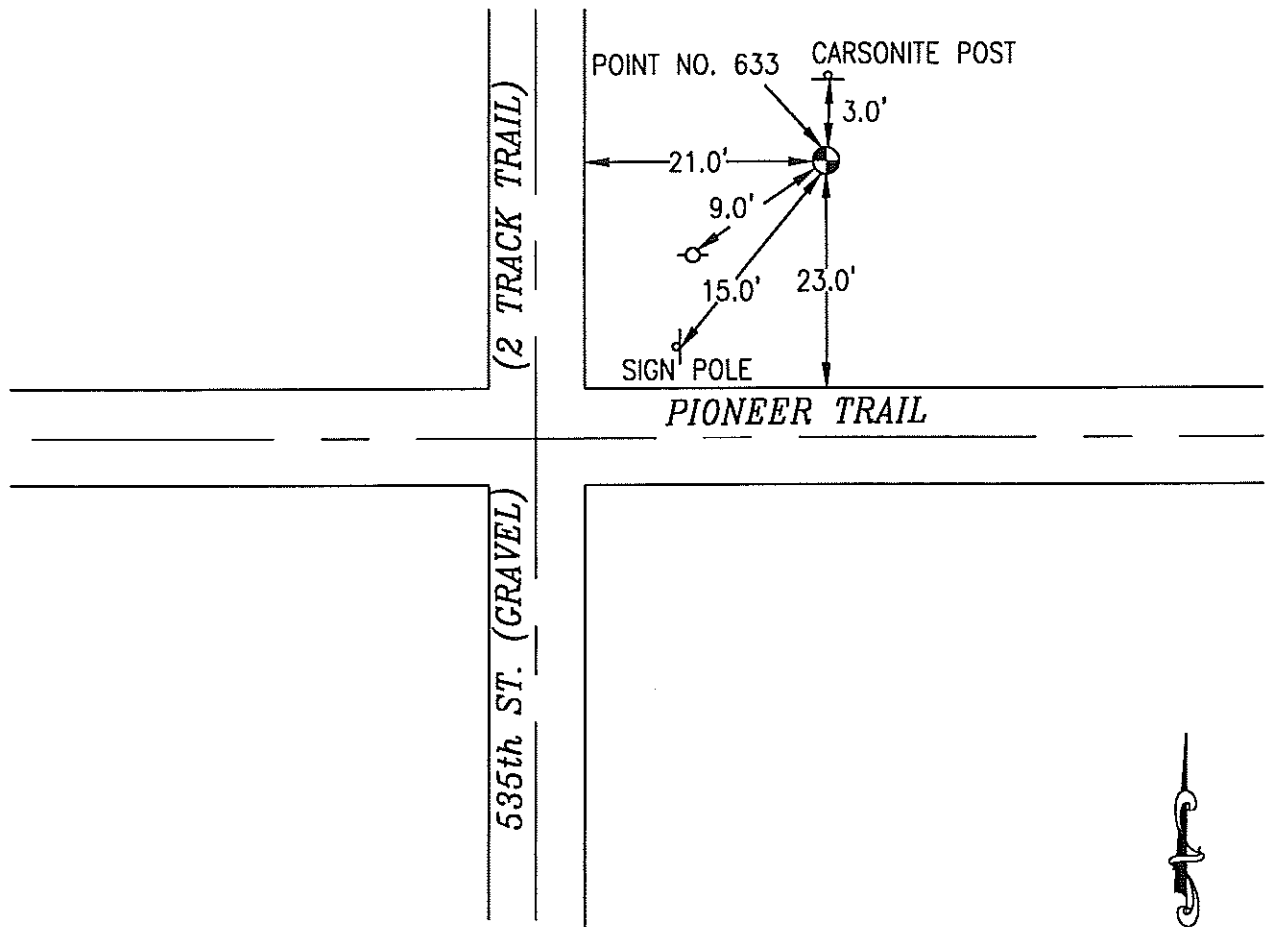
ok

633 743825-2

SET 5/8 INCH DIAMETER ROD WITH 2.5 INCH DIAMETER CAP, 0.5 FEET BELOW GROUND, STAMPED "POTTAWATTAMIE CO. 1998, 633, 743825-2". LOCATED APPROXIMATELY 21 FEET EAST OF THE EAST EDGE OF 535TH STREET, 23 FEET NORTH OF THE NORTH EDGE OF PIONEER TRAIL, 3 FEET SOUTH OF A ORANGE CARSONITE POST, 9 FEET NORTHEAST OF A POWERPOLE, 15 FEET NORTHEAST OF A SIGN POLE. ON THE GRISWOLD 7.5 MINUTE QUADRANGLE.

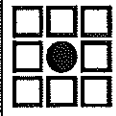


PT#	NAME OR DESIGNATION	GEODETTIC NAD83 (1996)		HEIGHT ELLIPSOID METERS	SP NAD83 (1996) IOWA SOUTH HEIGHT			SP NAD83 (1996) IOWA SOUTH HEIGHT		
		LATITUDE (North) DEG MIN SEC	LONGITUDE (West) DEG MIN SEC		NORTHING METERS	EASTING METERS	NAV88 METERS	NORTHING US FEET	EASTING US FEET	NAV88 US FEET
633	743825-2	41 10 25.52712	95 9 54.78644	298.01	131681.403	360280.851	326.39	432024.74	1182021.43	1070.8



NOT TO SCALE

LOCATION DIAGRAM  
 POTTAWATTAMIE COUNTY IOWA  
 GIS Mapping Project  
 GPS Survey Report



**MERRICK**  
 Engineers & Architects

2450 S. Peoria Street Aurora, Colorado 80014 (303)751-0741  
 Job Number: 50013142  
 Date: November 5, 1998