

**Scott County, Iowa**  
Iowa South Zone (1402)  
Horiz. Datum: NAD83(1996)  
Vert. Datum: NAVD 1988  
US Survey Feet  
**2005**

Point Name: **1028**

**Designation:** GPS-28, Bettendorf GPS 2003 (Set by Howard R Green in 2003)

Northing: **572623.03sft**    Easting: **2456393.36sft**

Orthometric Height: **632.07sft**    Ellipsoid Height: **524.53sft**    **Geoid03**

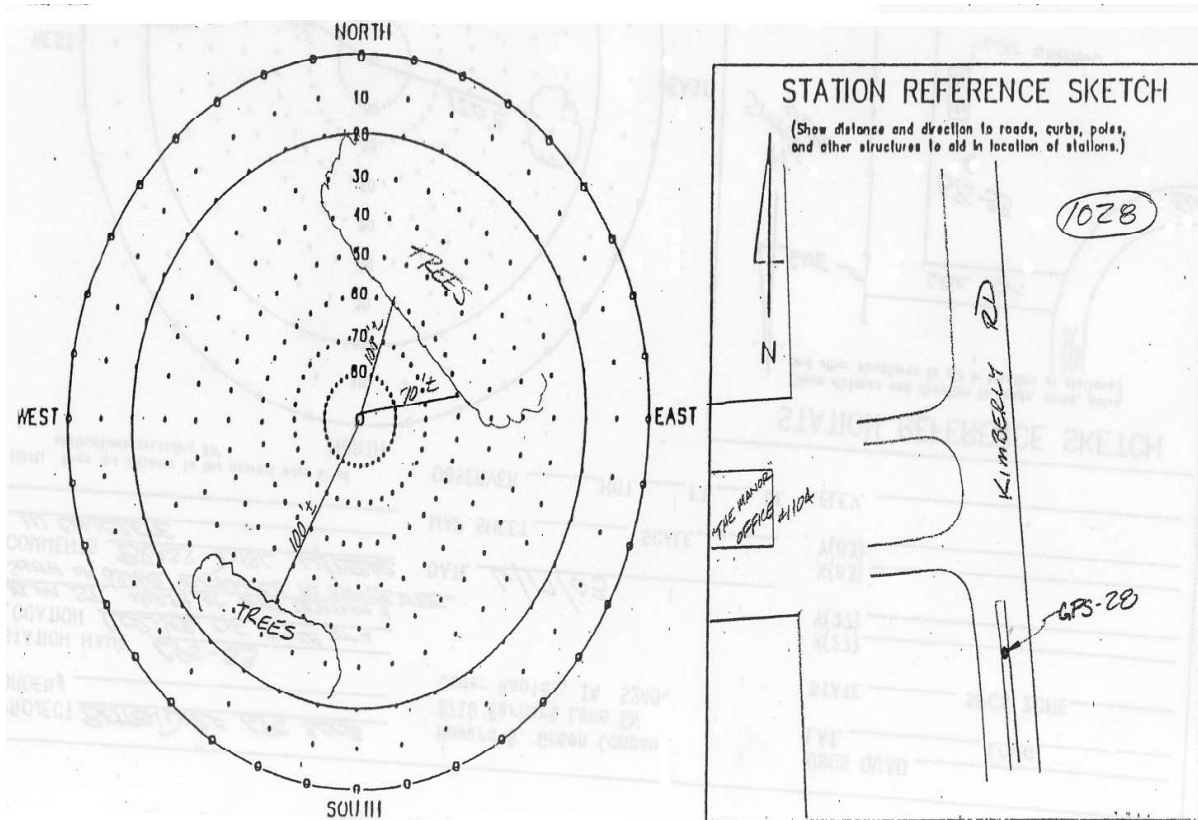
Latitude: **41°31'59.89978"N**

Longitude: **90°31'08.70042"W**

Mapping Angle: **1°57'49"**

Combination Scale Factor: **0.999940140**

**Monument Type:** Brass disc w/rebar in concrete



*This document was prepared by DCI for use by Scott Co, Iowa.*