

**Scott County, Iowa**  
Iowa South Zone (1402)  
Horiz. Datum: NAD83(1996)  
Vert. Datum: NAVD 1988  
US Survey Feet  
**2005**

Point Name: **103**

**Designation:** MUSCATINE CO. GPS CONTROL PT 2000-103 (Set by ASI in 2000)

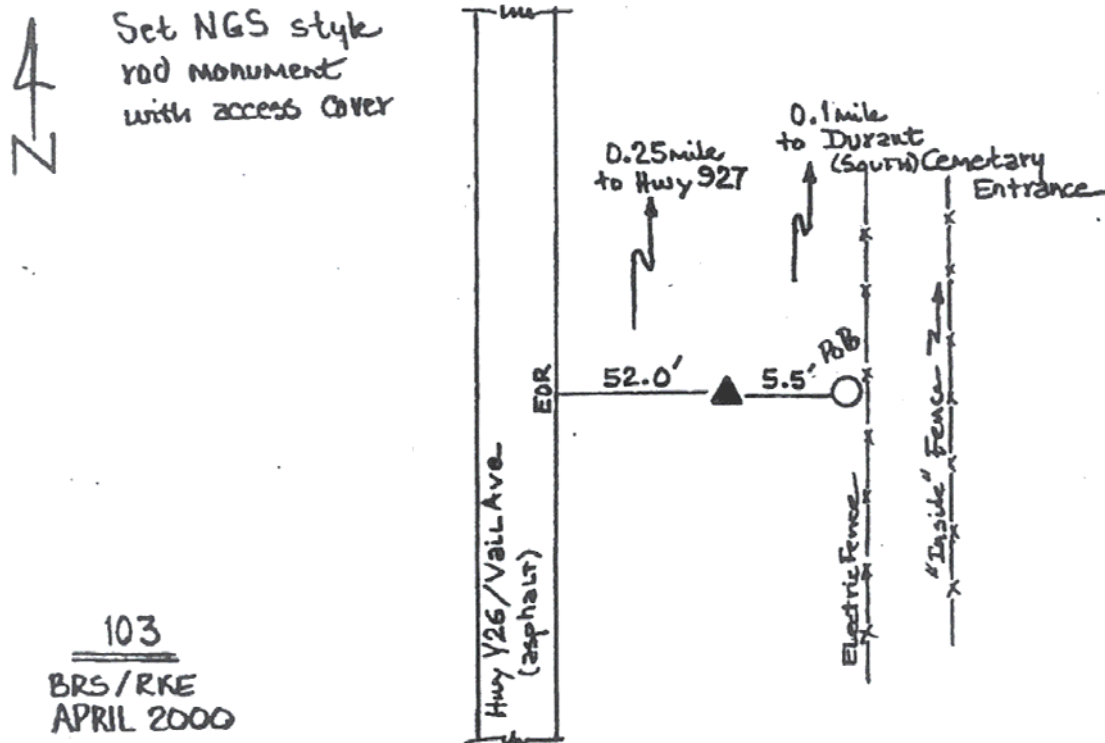
Northing: **591444.14sft**    Easting: **2351592.11sft**

Orthometric Height: **684.64sft**    Ellipsoid Height: **577.31sft**    **Geoid03**

Latitude: **41°35'38.97022"N**    Longitude: **90°53'58.71340"W**

Mapping Angle: **1°42'46"**    Combination Scale Factor: **0.999944340**

**Monument Type:** 5/8" dia. driven aluminum rod with a 2-1/2" dia. aluminum cap and permanent magnet encased in a 5" dia. PVC pipe with an aluminum access cover.



*This document was prepared by DCI for use by Scott Co, Iowa.*