

Scott County, Iowa
Iowa South Zone (1402)
Horiz. Datum: NAD83(1996)
Vert. Datum: NAVD 1988
US Survey Feet
2005

Point Name: **104**

Designation: MUSCATINE CO. GPS CONTROL PT 2000-104 (Set by ASI in 2000)

Northing: **593210.44sft** Easting: **2382825.09sft**

Orthometric Height: **733.82sft** Ellipsoid Height: **626.44sft** **Geoid03**

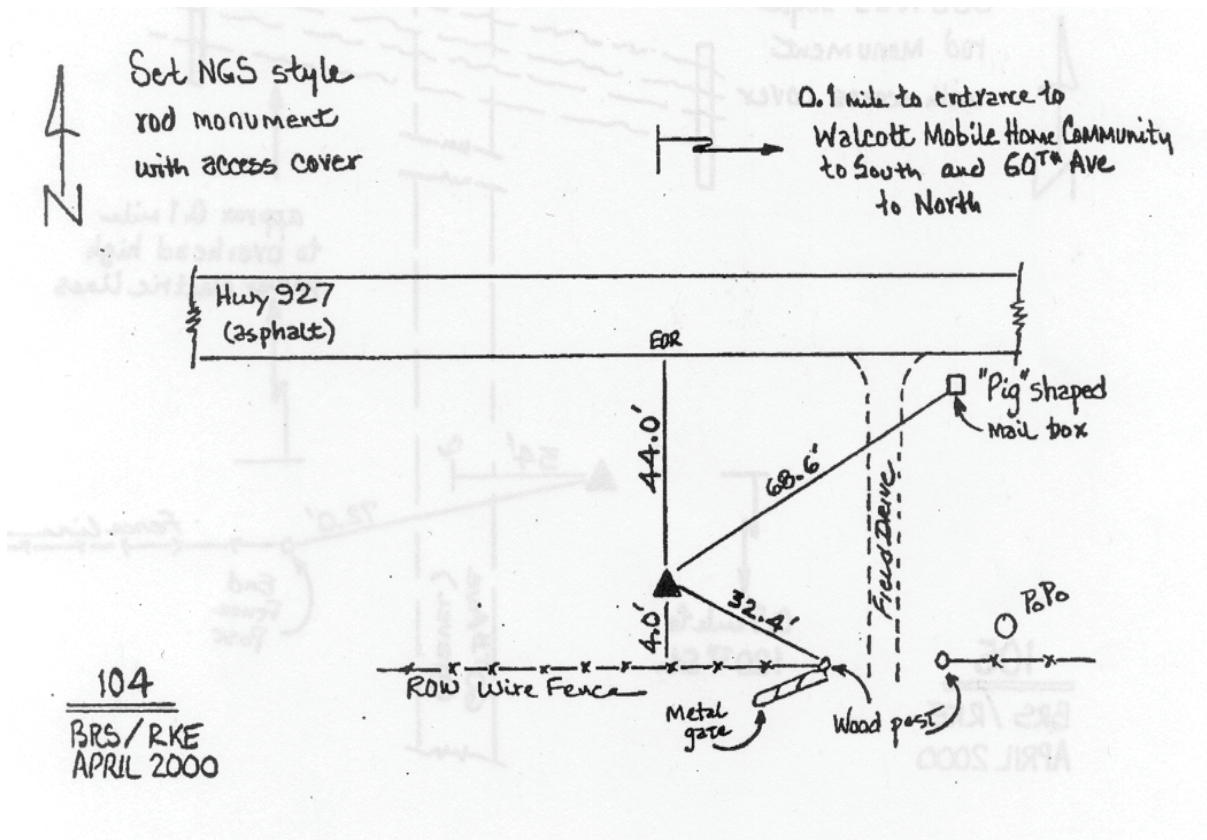
Latitude: **41°35'46.98663"N**

Longitude: **90°47'07.12589"W**

Mapping Angle: **1°47'17"**

Combination Scale Factor: **0.999942260**

Monument Type: 5/8" dia. driven aluminum rod with a 2-1/2" dia. aluminum cap and permanent magnet encased in a 5" dia. PVC pipe with an aluminum access cover.



This document was prepared by DCI for use by Scott Co, Iowa.