

Scott County, Iowa
Iowa South Zone (1402)
Horiz. Datum: NAD83(1996)
Vert. Datum: NAVD 1988
US Survey Feet
2005

Point Name: **105**

Designation: MUSCATINE CO. GPS CONTROL PT 2000-105 (Set by ASI in 2000)

Northing: **582700.86sft** Easting: **2383441.29sft**

Orthometric Height: **731.82sft** Ellipsoid Height: **624.39sft** **Geoid03**

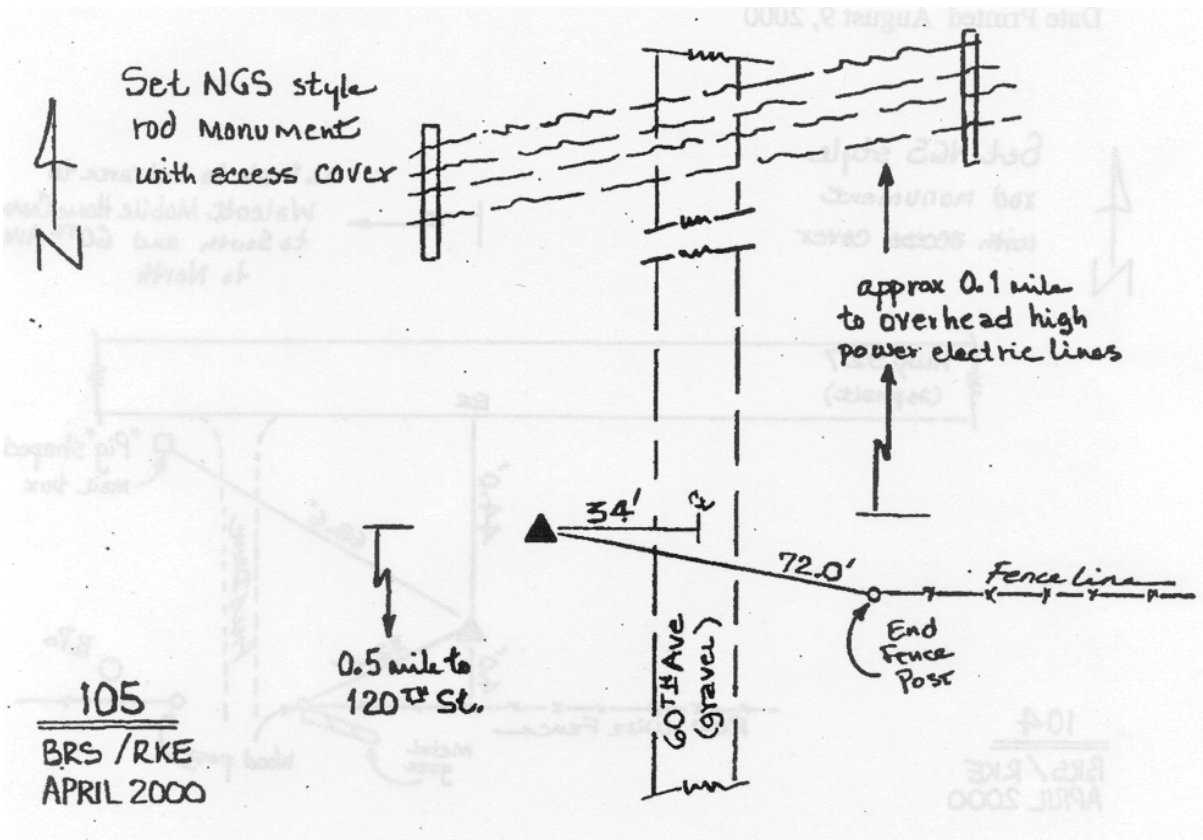
Latitude: **41°34'03.01347"N**

Longitude: **90°47'03.33760"W**

Mapping Angle: **1°47'20"**

Combination Scale Factor: **0.999939010**

Monument Type: 5/8" dia. driven aluminum rod with a 2-1/2" dia. aluminum cap and permanent magnet encased in a 5" dia. PVC pipe with an aluminum access cover.



This document was prepared by DCI for use by Scott Co, Iowa.