

**Scott County, Iowa**  
Iowa South Zone (1402)  
Horiz. Datum: NAD83(1996)  
Vert. Datum: NAVD 1988  
US Survey Feet  
**2005**

Point Name: **107**

**Designation:** MUSCATINE CO. GPS CONTROL PT 2000-107 (Set by ASI in 2000)

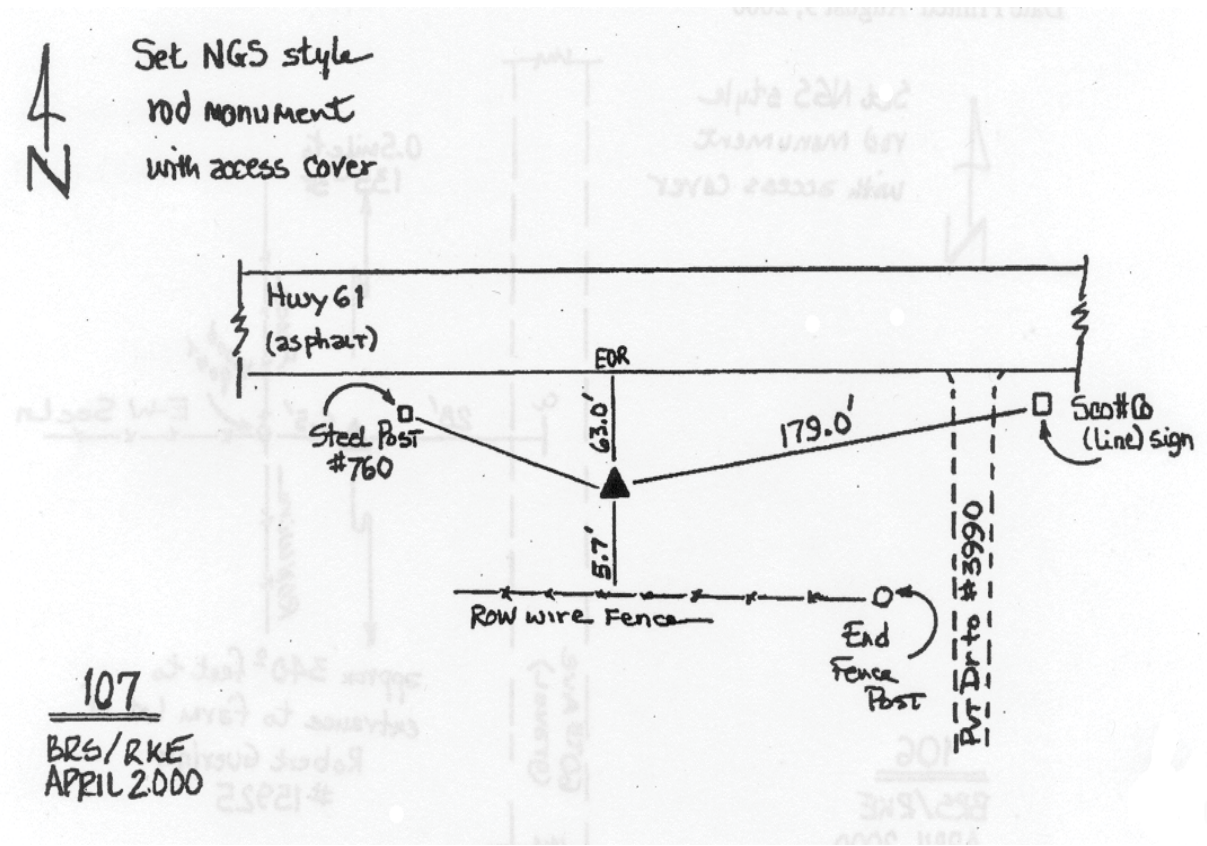
Northing: **561417.44sft**    Easting: **2383719.76sft**

Orthometric Height: **784.24sft**    Ellipsoid Height: **676.67sft**    **Geoid03**

Latitude: **41°30'32.74899"N**    Longitude: **90°47'08.41197"W**

Mapping Angle: **1°47'17"**    Combination Scale Factor: **0.999930520**

**Monument Type:** 5/8" dia. driven aluminum rod with a 2-1/2" dia. aluminum cap and permanent magnet encased in a 5" dia. PVC pipe with an aluminum access cover.



*This document was prepared by DCI for use by Scott Co, Iowa.*