

Scott County, Iowa
Iowa South Zone (1402)
Horiz. Datum: NAD83(1996)
Vert. Datum: NAVD 1988
US Survey Feet
2005

Point Name: **114**

Designation: MUSCATINE CO. GPS CONTROL PT 2000-114 (Set by ASI in 2000)

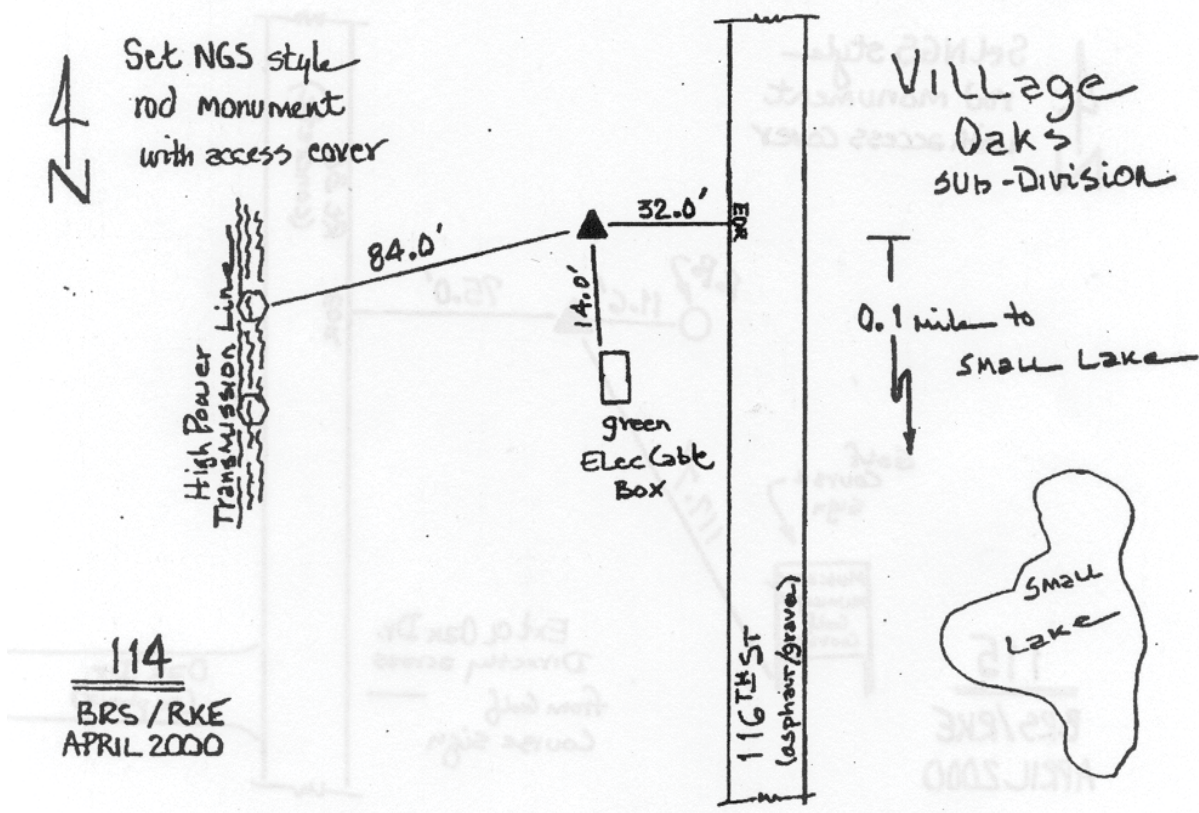
Northing: **550060.12sft** Easting: **2384223.58sft**

Orthometric Height: **690.92sft** Ellipsoid Height: **583.26sft** **Geoid03**

Latitude: **41°28'40.43619"N** Longitude: **90°47'06.45150"W**

Mapping Angle: **1°47'18"** Combination Scale Factor: **0.999932200**

Monument Type: 5/8" dia. driven aluminum rod with a 2-1/2" dia. aluminum cap and permanent magnet encased in a 5" dia. PVC pipe with an aluminum access cover.



This document was prepared by DCI for use by Scott Co, Iowa.