

**Scott County, Iowa**  
Iowa South Zone (1402)  
Horiz. Datum: NAD83(1996)  
Vert. Datum: NAVD 1988  
US Survey Feet  
**2005**

Point Name: **127**

**Designation:** MUSCATINE CO. GPS CONTROL PT 2000-127 (Set by ASI in 2000)

Northing: **543037.81sft**    Easting: **2384055.24sft**

Orthometric Height: **555.78sft**    Ellipsoid Height: **448.13sft**    **Geoid03**

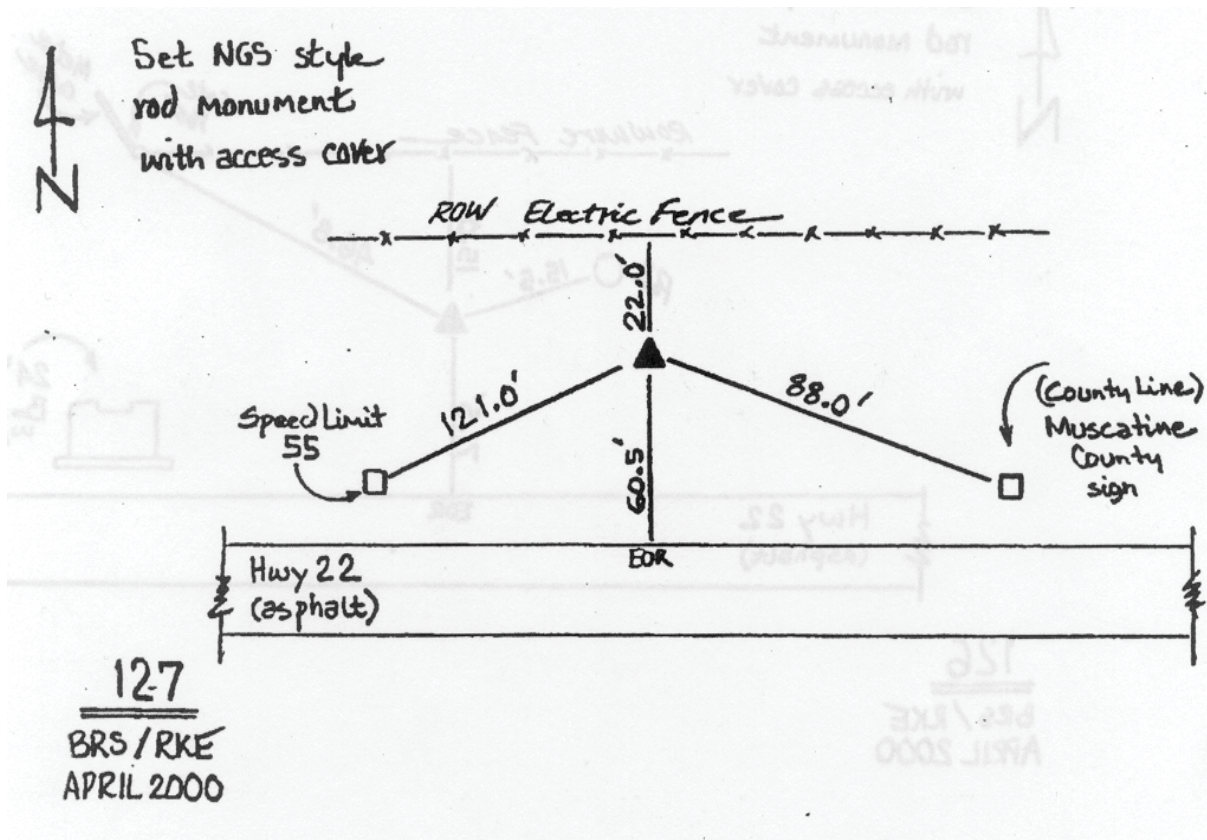
Latitude: **41°27'31.13986"N**

Longitude: **90°47'11.53957"W**

Mapping Angle: **1°47'14"**

Combination Scale Factor: **0.999937080**

**Monument Type:** 5/8" dia. driven aluminum rod with a 2-1/2" dia. aluminum cap and permanent magnet encased in a 5" dia. PVC pipe with an aluminum access cover.



*This document was prepared by DCI for use by Scott Co, Iowa.*