

Scott County, Iowa
Iowa South Zone (1402)
Horiz. Datum: NAD83(1996)
Vert. Datum: NAVD 1988
US Survey Feet
2005

Point Name: **13**

Designation: 2005-513 City of Clinton, Iowa GPS Control Point (Set by DCI in 2005)

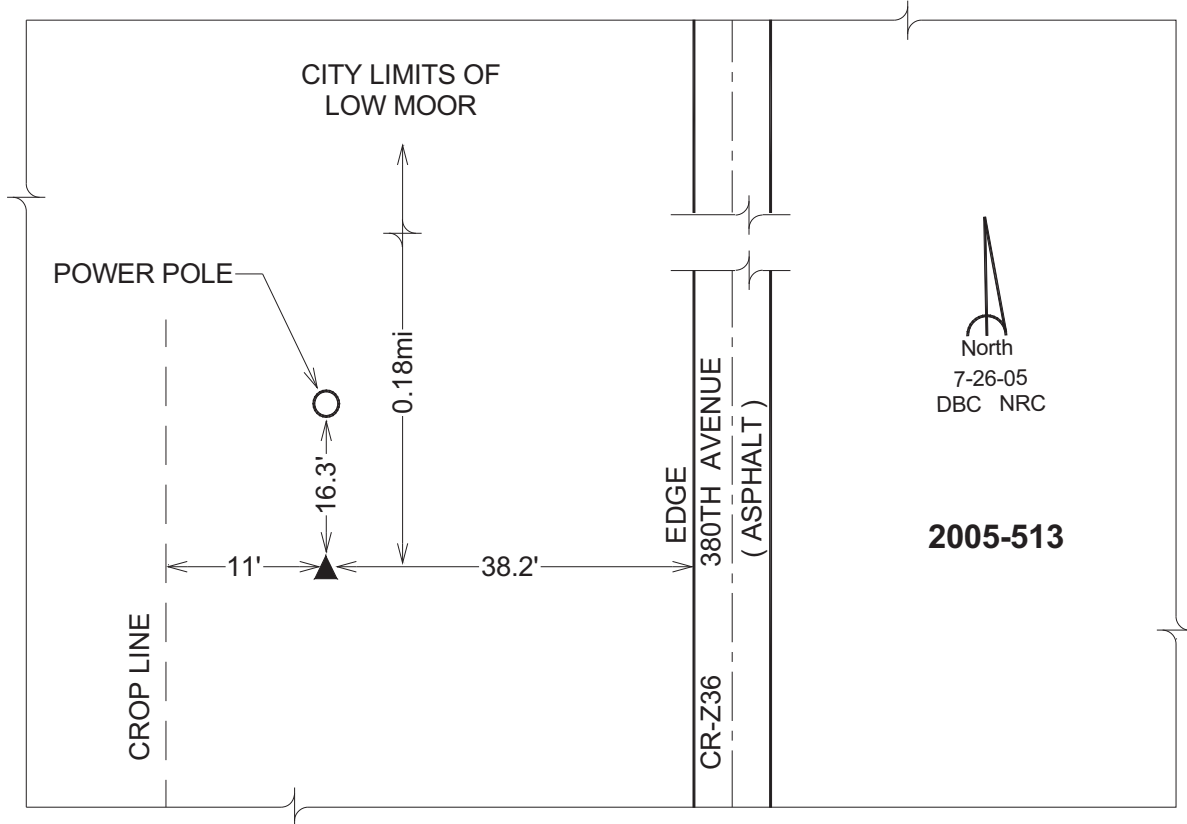
Northing: **669439.16sft** Easting: **2497826.20sft**

Orthometric Height: **650.09sft** Ellipsoid Height: **542.00sft** **Geoid03**

Latitude: **41°47'41.40672"N** Longitude: **90°21'18.24254"W**

Mapping Angle: **2°04'18"** Combination Scale Factor: **0.999976200**

Monument Type: Berntsen Top Security Rod Monument with a 2-1/2" dia. domed survey cap and permanent magnet encased in a 5" dia. PVC pipe with a NGS style aluminum access cover.



This document was prepared by DCI for use by Scott Co, Iowa.