

Scott County, Iowa
 Iowa South Zone (1402)
 Horiz. Datum: NAD83(1996)
 Vert. Datum: NAVD 1988
 US Survey Feet
2005

Point Name: **402**

Designation: City of Davenport, Surdex, GPS-2, (Set by Surdex in 1992)

Northing: **599539.91sft** Easting: **2423779.44sft**

Orthometric Height: **733.95sft** Ellipsoid Height: **626.73sft** **Geoid03**

Latitude: **41°36'36.51304"N** Longitude: **90°38'05.64944"W**

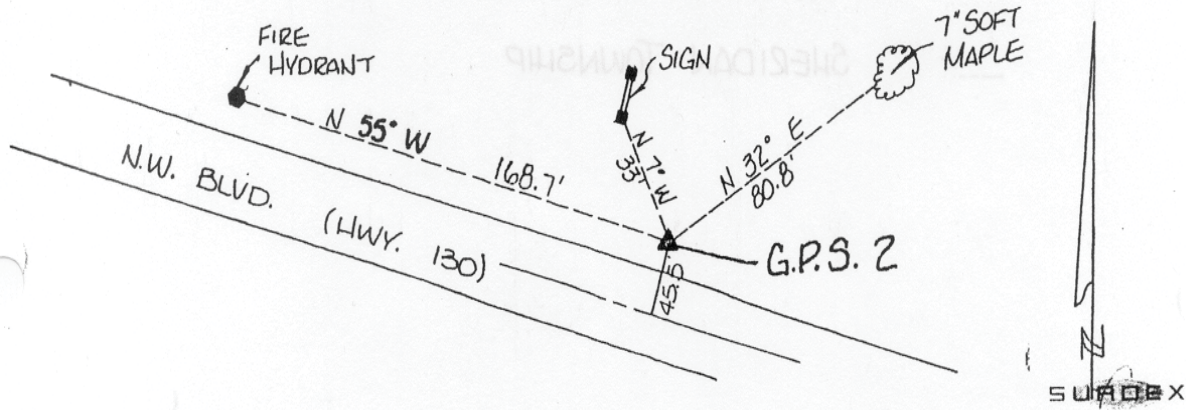
Mapping Angle: **1°53'14"** Combination Scale Factor: **0.999943930**

Monument Type: Berntsen GPS 3-Dimensional top security monument with a 3-1/4" dia. domed aluminum cap located inside an aluminum access cover.

OBJECT	BEARING	FEET
Carsonite Post	North	1.25
Panel Centerline Road	N 04D E	20.00
Field Entrance	N 40D W	43.60
Fence	South	31.20

DESCRIPTION AND SKETCH

The monument is a Berntsen GPS 3-Dimensional top security monument with cap. The monument is flush with the ground and can be found with a magnetic locator. A 3-1/4" domed aluminum cap stamped "City of Davenport, Surdex, GPS-2, 1992," is located inside an aluminum access cover encased with concrete. A flat head screwdriver is required to open the lid.



This document was prepared by DCI for use by Scott Co, Iowa.