

Scott County, Iowa
 Iowa South Zone (1402)
 Horiz. Datum: NAD83(1996)
 Vert. Datum: NAVD 1988
 US Survey Feet
2005

Point Name: **403**

Designation: City of Davenport, Surdex, GPS-3, (Set by Surdex in 1992)

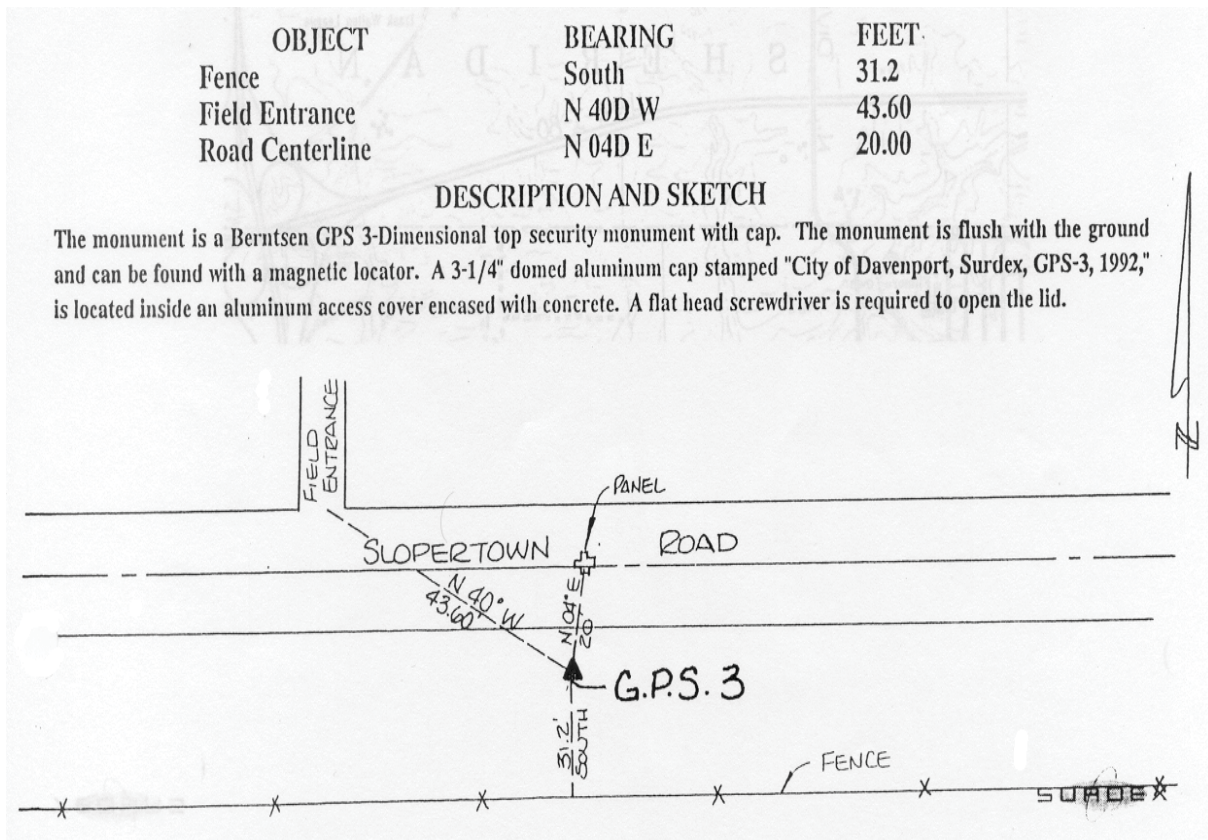
Northing: **602883.97sft** Easting: **2436403.49sft**

Orthometric Height: **746.31sft** Ellipsoid Height: **638.96sft** **Geoid03**

Latitude: **41°37'05.39278"N** Longitude: **90°35'18.08147"W**

Mapping Angle: **1°55'04"** Combination Scale Factor: **0.999944360**

Monument Type: Berntsen GPS 3-Dimensional top security monument with a 3-1/4" dia. domed aluminum cap located inside an aluminum access cover.



This document was prepared by DCI for use by Scott Co, Iowa.