

**Scott County, Iowa**  
 Iowa South Zone (1402)  
 Horiz. Datum: NAD83(1996)  
 Vert. Datum: NAVD 1988  
 US Survey Feet  
**2005**

Point Name: **404**

**Designation:** City of Davenport, Surdex, GPS-4, (Set by Surdex in 1992)

Northing: **600531.56sft**    Easting: **2447062.59sft**

Orthometric Height: **742.98sft**    Ellipsoid Height: **635.64sft**    **Geoid03**

Latitude: **41°36'38.61668"N**    Longitude: **90°32'58.87474"W**

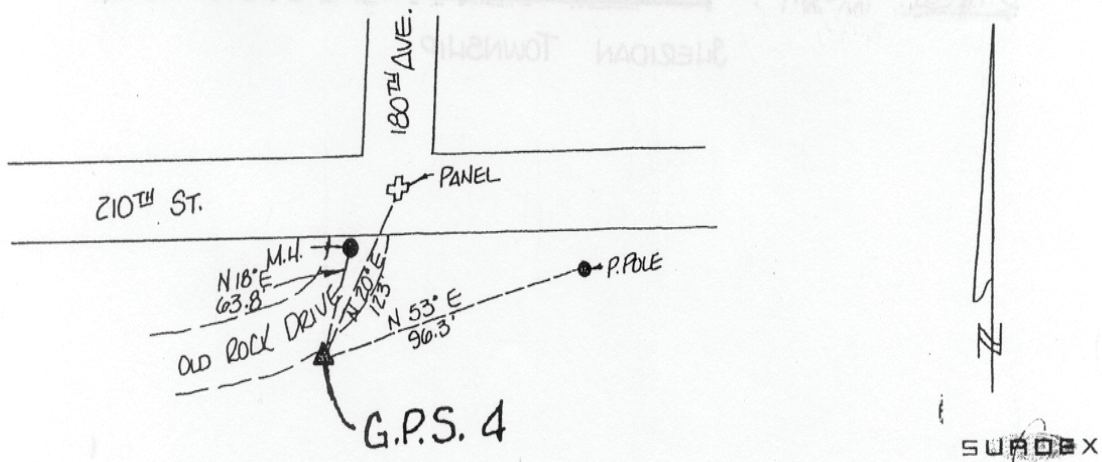
Mapping Angle: **1°56'36"**    Combination Scale Factor: **0.999943580**

**Monument Type:** Berntsen GPS 3-Dimensional top security monument with a 3-1/4" dia. domed aluminum cap located inside an aluminum access cover.

OBJECT	BEARING	FEET.
Manhole	N 18D E	63.8
Pole	N 53D E	96.3
Road Centerline	N 20D E	123

**DESCRIPTION AND SKETCH**

The monument is a Berntsen GPS 3-Dimensional top security monument with cap. The monument is flush with the ground and can be found with a magnetic locator. A 3-1/4" domed aluminum cap stamped "City of Davenport, Surdex, GPS-4, 1992," is located inside an aluminum access cover encased with concrete. A flat head screwdriver is required to open the lid.



*This document was prepared by DCI for use by Scott Co, Iowa.*