

Scott County, Iowa
 Iowa South Zone (1402)
 Horiz. Datum: NAD83(1996)
 Vert. Datum: NAVD 1988
 US Survey Feet
2005

Point Name: **405**

Designation: City of Davenport, Surdex, GPS-5, (Set by Surdex in 1992)

Northing: **595901.08sft** Easting: **2460211.26sft**

Orthometric Height: **732.54sft** Ellipsoid Height: **625.11sft** **Geoid03**

Latitude: **41°35'48.45414"N** Longitude: **90°30'07.98241"W**

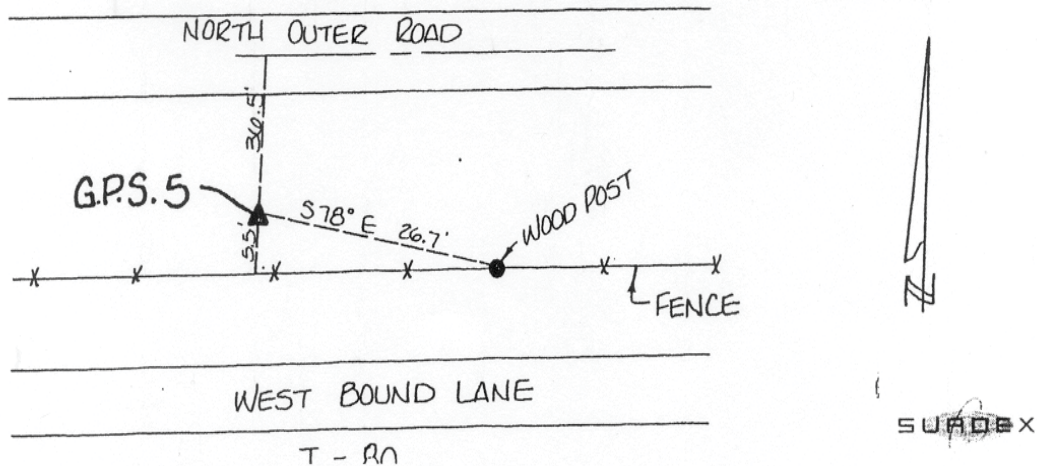
Mapping Angle: **1°58'29"** Combination Scale Factor: **0.999942370**

Monument Type: Berntsen GPS 3-Dimensional top security monument with a 3-1/4" dia. domed aluminum cap located inside an aluminum access cover.

OBJECT	BEARING	FEET
Fence	South	5.50
Wood Fence Post	S 78D E	26.7
Road Centerline	North	36.5

DESCRIPTION AND SKETCH

The monument is a Berntsen GPS 3-Dimensional top security monument with cap. The monument is flush with the ground and can be found with a magnetic locator. A 3-1/4" domed aluminum cap stamped "City of Davenport, Surdex, GPS-5, 1992," is located inside an aluminum access cover encased with concrete. A flat head screwdriver is required to open the lid.



This document was prepared by DCI for use by Scott Co, Iowa.