

Scott County, Iowa
 Iowa South Zone (1402)
 Horiz. Datum: NAD83(1996)
 Vert. Datum: NAVD 1988
 US Survey Feet
2005

Point Name: **406**

Designation: City of Davenport, Surdex, GPS-6, (Set by Surdex in 1992)

Northing: **589365.55sft** Easting: **2449601.32sft**

Orthometric Height: **715.70sft** Ellipsoid Height: **608.33sft** **Geoid03**

Latitude: **41°34'47.50981"N** Longitude: **90°32'30.47115"W**

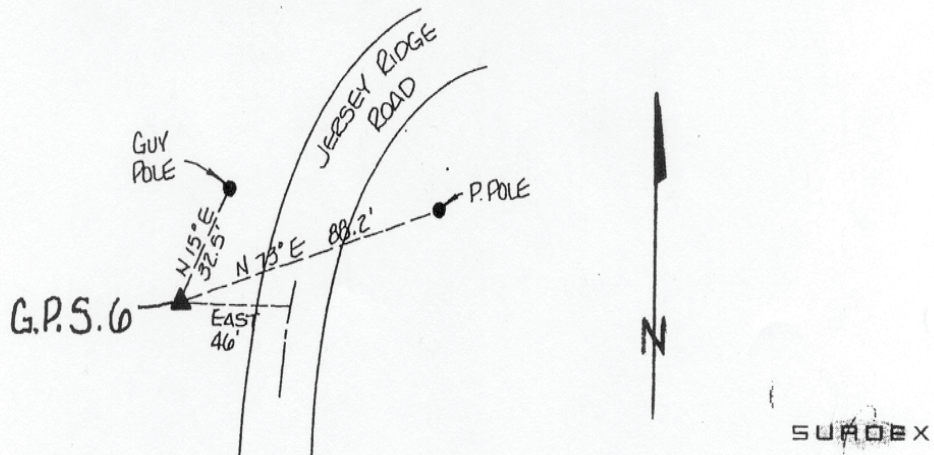
Mapping Angle: **1°56'55"** Combination Scale Factor: **0.999941180**

Monument Type: Berntsen GPS 3-Dimensional top security monument with a 3-1/4" dia. domed aluminum cap located inside an aluminum access cover.

OBJECT	BEARING	FEET.
Guy Pole	N 15D E	32.5
Power Pole	N 73D E	88.2
Road Centerline	East	46

DESCRIPTION AND SKETCH

The monument is a Berntsen GPS 3-Dimensional top security monument with cap. The monument is flush with the ground and can be found with a magnetic locator. A 3-1/4" domed aluminum cap stamped "City of Davenport, Surdex, GPS-6, 1992," is located inside an aluminum access cover encased with concrete. A flat head screwdriver is required to open the lid.



This document was prepared by DCI for use by Scott Co, Iowa.