

Scott County, Iowa
 Iowa South Zone (1402)
 Horiz. Datum: NAD83(1996)
 Vert. Datum: NAVD 1988
 US Survey Feet
2005

Point Name: **407**

Designation: City of Davenport, Surdex, GPS-7, (Set by Surdex in 1992)

Northing: **587092.28sft** Easting: **2441358.10sft**

Orthometric Height: **712.37sft** Ellipsoid Height: **604.92sft** **Geoid03**

Latitude: **41°34'27.81795"N** Longitude: **90°34'19.88298"W**

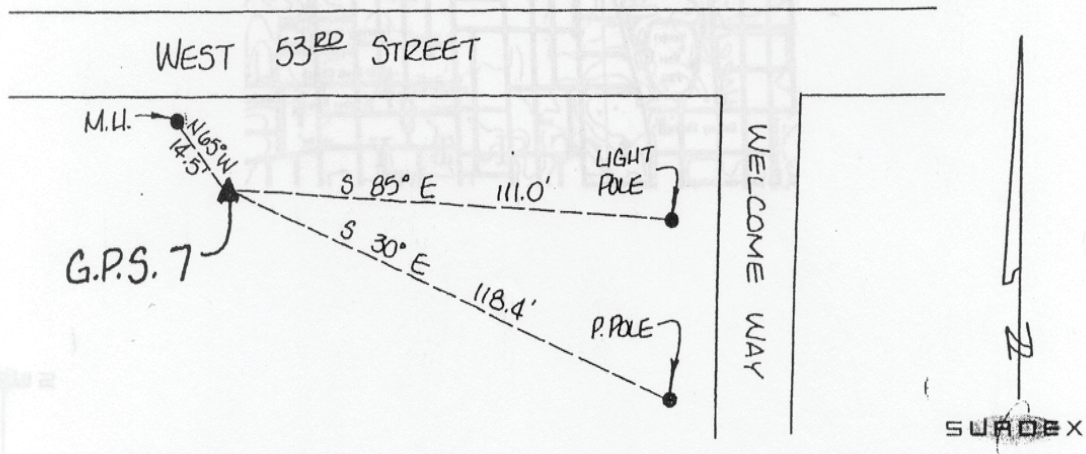
Mapping Angle: **1°55'43"** Combination Scale Factor: **0.999940710**

Monument Type: Berntsen GPS 3-Dimensional top security monument with a 3-1/4" dia. domed aluminum cap located inside an aluminum access cover.

OBJECT	BEARING	FEET
Manhole	N 65D W	14.5
Light Pole	S 85D E	111.0
Power Pole	S 30D E	118.4

DESCRIPTION AND SKETCH

The monument is a Berntsen GPS 3-Dimensional top security monument with cap. The monument is flush with the ground and can be found with a magnetic locator. A 3-1/4" domed aluminum cap stamped "City of Davenport, Surdex, GPS-7, 1992," is located inside an aluminum access cover encased with concrete. A flat head screwdriver is required to open the lid.



This document was prepared by DCI for use by Scott Co, Iowa.