

**Scott County, Iowa**  
 Iowa South Zone (1402)  
 Horiz. Datum: NAD83(1996)  
 Vert. Datum: NAVD 1988  
 US Survey Feet  
**2005**

Point Name: **408**

**Designation:** City of Davenport, Surdex, GPS-8, (Set by Surdex in 1992)

Northing: **589502.90sft**    Easting: **2433620.00sft**

Orthometric Height: **733.83sft**    Ellipsoid Height: **626.47sft**    **Geoid03**

Latitude: **41°34'54.18188"N**    Longitude: **90°36'00.58080"W**

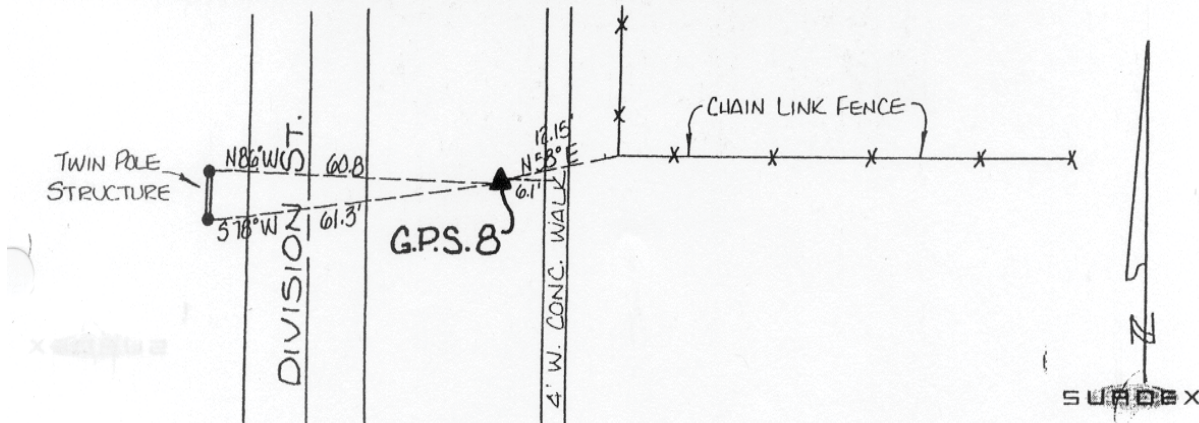
Mapping Angle: **1°54'36"**    Combination Scale Factor: **0.999940530**

**Monument Type:** Berntsen GPS 3-Dimensional top security monument with a 3-1/4" dia. domed aluminum cap located inside an aluminum access cover.

OBJECT	BEARING	FEET.
Carsonite Post	North	1.00'
Chainlink Fence Corner	N 58D E	12.15'
C/L Concrete Walk	East	6.10'
Twin Pole Structure	S 78D W	61.30'
	N 86D W	60.80'

**DESCRIPTION AND SKETCH**

The monument is a Berntsen GPS 3-Dimensional top security monument with cap. The monument is flush with the ground and can be found with a magnetic locator. A 3-1/4" domed aluminum cap stamped "City of Davenport, Surdex, GPS-8, 1992," is located inside an aluminum access cover encased with concrete. A flat head screwdriver is required to open the lid.



*This document was prepared by DCI for use by Scott Co, Iowa.*