

**Scott County, Iowa**  
 Iowa South Zone (1402)  
 Horiz. Datum: NAD83(1996)  
 Vert. Datum: NAVD 1988  
 US Survey Feet  
**2005**

Point Name: **409**

**Designation:** City of Davenport, Surdex, GPS-9, (Set by Surdex in 1992)

Northing: **590456.70sft**    Easting: **2414963.03sft**

Orthometric Height: **744.13sft**    Ellipsoid Height: **636.78sft**    **Geoid03**

Latitude: **41°35'09.67215"N**    Longitude: **90°40'05.54271"W**

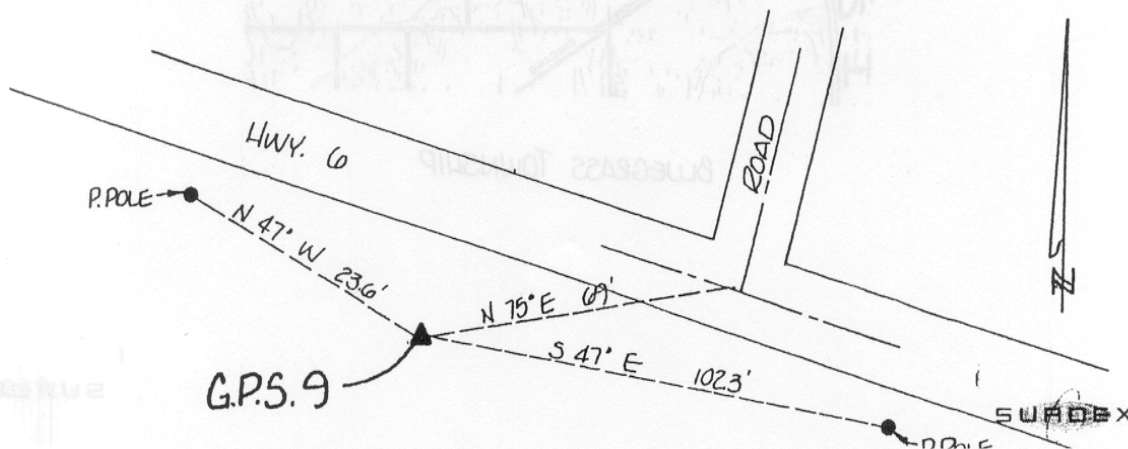
Mapping Angle: **1°51'55"**    Combination Scale Factor: **0.999940540**

**Monument Type:** Berntsen GPS 3-Dimensional top security monument with a 3-1/4" dia. domed aluminum cap located inside an aluminum access cover.

OBJECT	BEARING	FEET
Power Pole	N 47D W	23.6
Power Pole	S 47D E	102.3
Road Intersection	N 75D E	69

**DESCRIPTION AND SKETCH**

The monument is a Berntsen GPS 3-Dimensional top security monument with cap. The monument is flush with the ground and can be found with a magnetic locator. A 3-1/4" domed aluminum cap stamped "City of Davenport, Surdex, GPS-9, 1992," is located inside an aluminum access cover encased with concrete. A flat head screwdriver is required to open the lid.



*This document was prepared by DCI for use by Scott Co, Iowa.*