

Scott County, Iowa
 Iowa South Zone (1402)
 Horiz. Datum: NAD83(1996)
 Vert. Datum: NAVD 1988
 US Survey Feet
2005

Point Name: **410**

Designation: City of Davenport, Surdex, GPS-10, (Set by Surdex in 1992)

Northing: **586386.78sft** Easting: **2420354.86sft**

Orthometric Height: **722.56sft** Ellipsoid Height: **615.15sft** **Geoid03**

Latitude: **41°34'27.74326"N** Longitude: **90°38'56.38210"W**

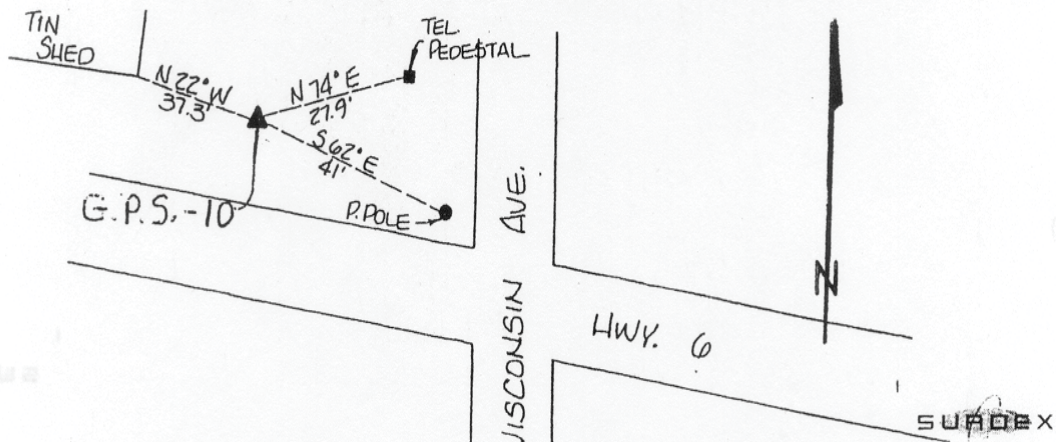
Mapping Angle: **1°52'41"** Combination Scale Factor: **0.999940220**

Monument Type: Berntsen GPS 3-Dimensional top security monument with a 3-1/4" dia. domed aluminum cap located inside an aluminum access cover.

OBJECT	BEARING	FEET
Corner Shed	N 22° W	37.3
Telephone Pedestal	N 74° E	27.9
Power Pole	S 62° E	41

DESCRIPTION AND SKETCH

The monument is a Berntsen GPS 3-Dimensional top security monument with cap. The monument is flush with the ground and can be found with a magnetic locator. A 3-1/4" domed aluminum cap stamped "City of Davenport, Surdex, GPS-10, 1992," is located inside an aluminum access cover encased with concrete. A flat head screwdriver is required to open the lid.



This document was prepared by DCI for use by Scott Co, Iowa.