

Scott County, Iowa
 Iowa South Zone (1402)
 Horiz. Datum: NAD83(1996)
 Vert. Datum: NAVD 1988
 US Survey Feet
2005

Point Name: **414**

Designation: City of Davenport, Surdex, GPS-14, (Set by Surdex in 1992)

Northing: **579353.01sft** Easting: **2447241.02sft**

Orthometric Height: **635.03sft** Ellipsoid Height: **527.73sft** **Geoid03**

Latitude: **41°33'09.43493"N** Longitude: **90°33'05.97566"W**

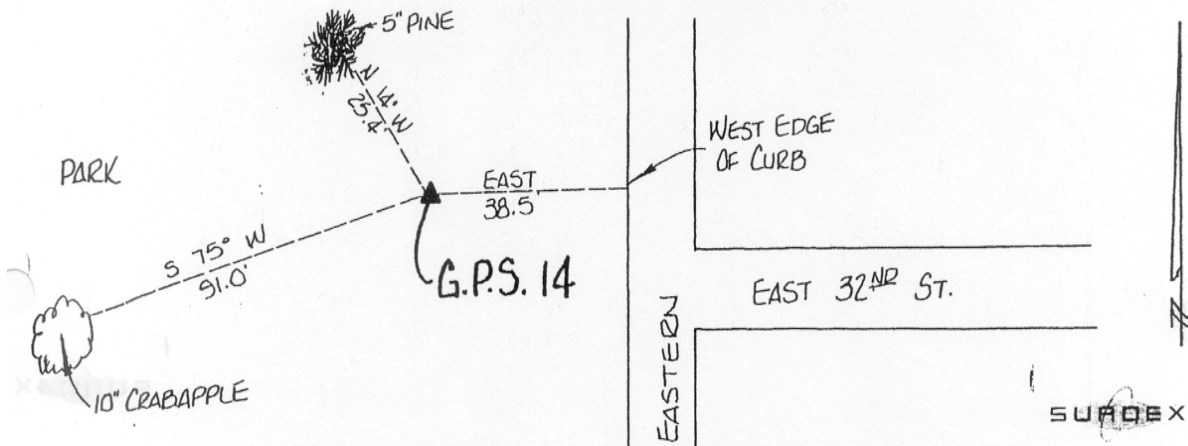
Mapping Angle: **1°56'31"** Combination Scale Factor: **0.999941990**

Monument Type: Berntsen GPS 3-Dimensional top security monument with a 3-1/4" dia. domed aluminum cap located inside an aluminum access cover.

OBJECT	BEARING	FEET
Curb	East	38.5
Pine Tree	N 14D W	25.4
Crab Apple Tree	S 75D W	91.0

DESCRIPTION AND SKETCH

The monument is a Berntsen GPS 3-Dimensional top security monument with cap. The monument is flush with the ground and can be found with a magnetic locator. A 3-1/4" domed aluminum cap stamped "City of Davenport, Surdex, GPS-14, 1992," is located inside an aluminum access cover encased with concrete. A flat head screwdriver is required to open the lid.



This document was prepared by DCI for use by Scott Co, Iowa.