

Scott County, Iowa
 Iowa South Zone (1402)
 Horiz. Datum: NAD83(1996)
 Vert. Datum: NAVD 1988
 US Survey Feet
2005

Point Name: **415**

Designation: City of Davenport, Surdex, GPS-15, (Set by Surdex in 1992)

Northing: **574806.10sft** Easting: **2455348.17sft**

Orthometric Height: **674.87sft** Ellipsoid Height: **567.31sft** **Geoid03**

Latitude: **41°32'21.80957"N** Longitude: **90°31'21.45311"W**

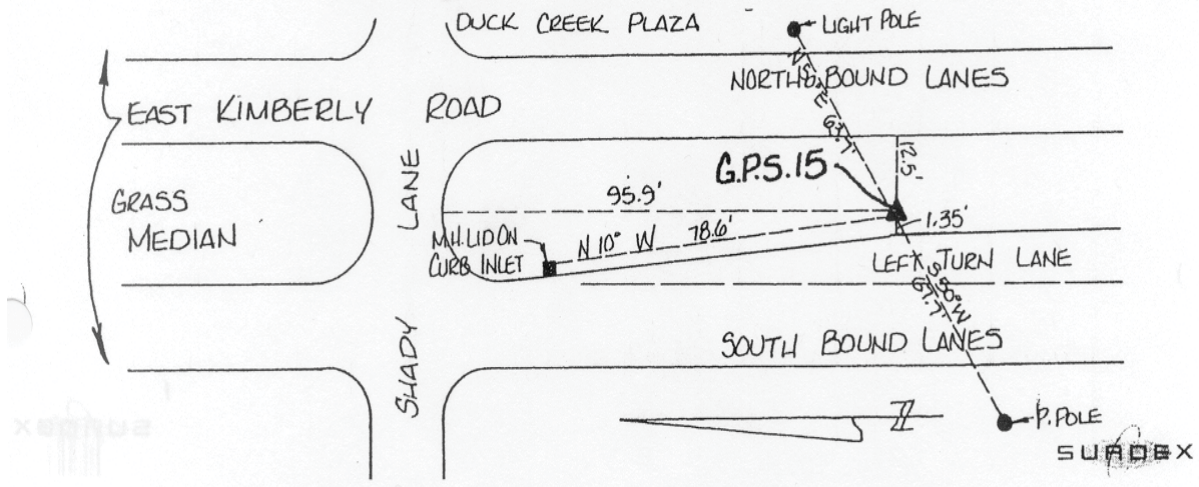
Mapping Angle: **1°57'40"** Combination Scale Factor: **0.999938720**

Monument Type: Berntsen GPS 3-Dimensional top security monument with a 3-1/4" dia. domed aluminum cap located inside an aluminum access cover.

OBJECT	BEARING	FEET
Manhole	N 10D W	78.6
Light Pole	N 50D E	63.7
Power Pole	S 50D W	67.7

DESCRIPTION AND SKETCH

The monument is a Berntsen GPS 3-Dimensional top security monument with cap. The monument is flush with the ground and can be found with a magnetic locator. A 3-1/4" domed aluminum cap stamped "City of Davenport, Surdex, GPS-15, 1992," is located inside an aluminum access cover encased with concrete. A flat head screwdriver is required to open the lid.



This document was prepared by DCI for use by Scott Co, Iowa.