

**Scott County, Iowa**  
 Iowa South Zone (1402)  
 Horiz. Datum: NAD83(1996)  
 Vert. Datum: NAVD 1988  
 US Survey Feet  
**2005**

Point Name: **416**

**Designation:** City of Davenport, Surdex, GPS-16, (Set by Surdex in 1992)

Northing: **573757.19sft**    Easting: **2433861.81sft**

Orthometric Height: **718.28sft**    Ellipsoid Height: **610.93sft**    **Geoid03**

Latitude: **41°32'18.62141"N**    Longitude: **90°36'04.30430"W**

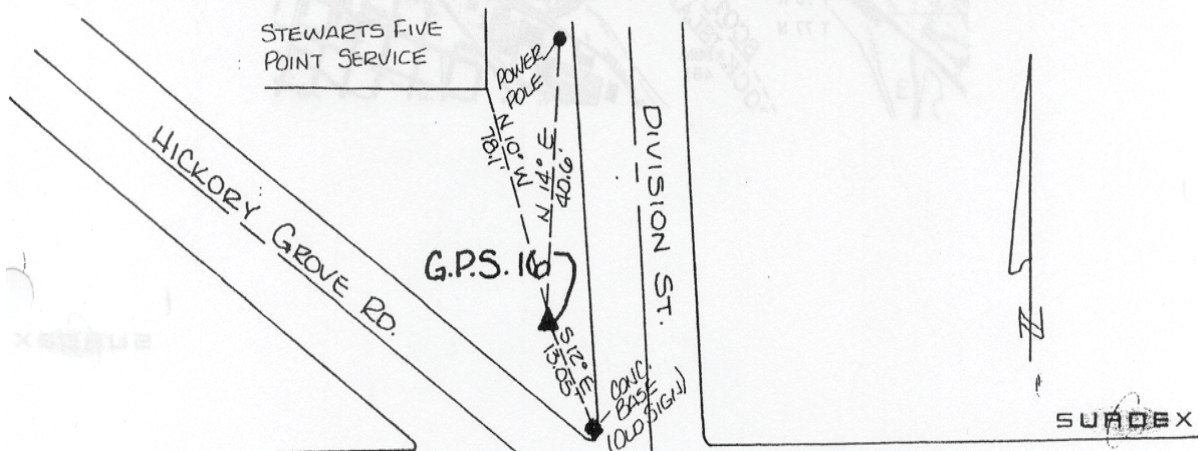
Mapping Angle: **1°54'34"**    Combination Scale Factor: **0.999936540**

**Monument Type:** Berntsen GPS 3-Dimensional top security monument with a 3-1/4" dia. domed aluminum cap located inside an aluminum access cover.

OBJECT	BEARING	FEET:
Carsonite Post	N 14D E	40.00'
On Power-Pole	N 14D E	40.60'
S.E. Corner Building	N 10D W	78.10'
Concrete Base (Old Sign)	S 12D E	13.05'

**DESCRIPTION AND SKETCH**

The monument is a Berntsen GPS 3-Dimensional top security monument with cap. The monument is flush with the ground and can be found with a magnetic locator. A 3-1/4" domed aluminum cap stamped "City of Davenport, Surdex, GPS-16, 1992," is located inside an aluminum access cover encased with concrete. A flat head screwdriver is required to open the lid.



*This document was prepared by DCI for use by Scott Co, Iowa.*