

Scott County, Iowa
 Iowa South Zone (1402)
 Horiz. Datum: NAD83(1996)
 Vert. Datum: NAVD 1988
 US Survey Feet
2005

Point Name: **417**

Designation: City of Davenport, Surdex, GPS-17, (Set by Surdex in 1992)

Northing: **570549.22sft** Easting: **2420861.31sft**

Orthometric Height: **740.51sft** Ellipsoid Height: **633.22sft** **Geoid03**

Latitude: **41°31'51.18824"N** Longitude: **90°38'56.55071"W**

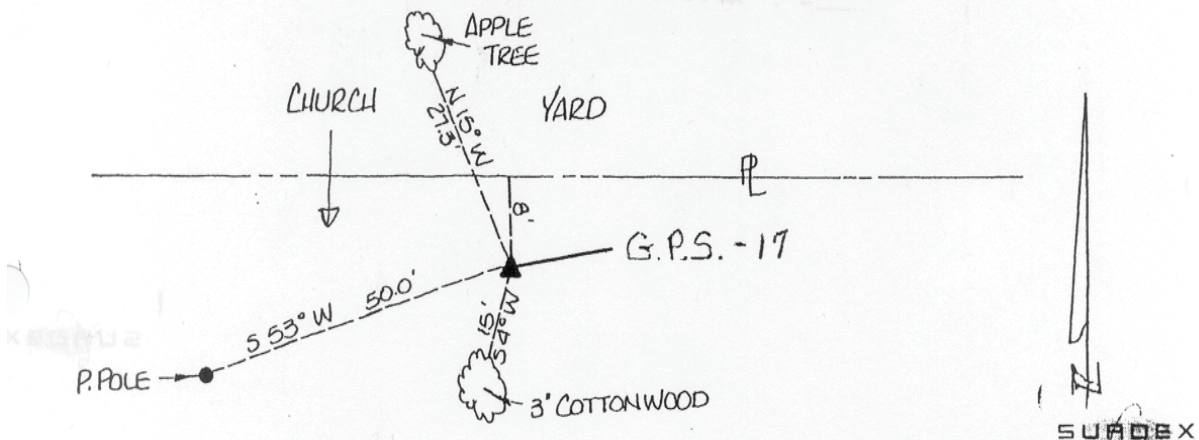
Mapping Angle: **1°52'41"** Combination Scale Factor: **0.999934710**

Monument Type: Berntsen GPS 3-Dimensional top security monument with a 3-1/4" dia. domed aluminum cap located inside an aluminum access cover.

OBJECT	BEARING	FEET
Power Pole	S 53D W	50
Apple Tree	N 15D W	27.3
Cottonwood Tree	S. 4° W	15'

DESCRIPTION AND SKETCH

The monument is a Berntsen GPS 3-Dimensional top security monument with cap. The monument is flush with the ground and can be found with a magnetic locator. A 3-1/4" domed aluminum cap stamped "City of Davenport, Surdex, GPS-17, 1992," is located inside an aluminum access cover encased with concrete. A flat head screwdriver is required to open the lid.



This document was prepared by DCI for use by Scott Co, Iowa.