

**Scott County, Iowa**  
Iowa South Zone (1402)  
Horiz. Datum: NAD83(1996)  
Vert. Datum: NAVD 1988  
US Survey Feet  
**2005**

Point Name: **510**

**Designation:** TBM set near "P 70" (PID: MG0337) NGS 2nd order vertical control station.

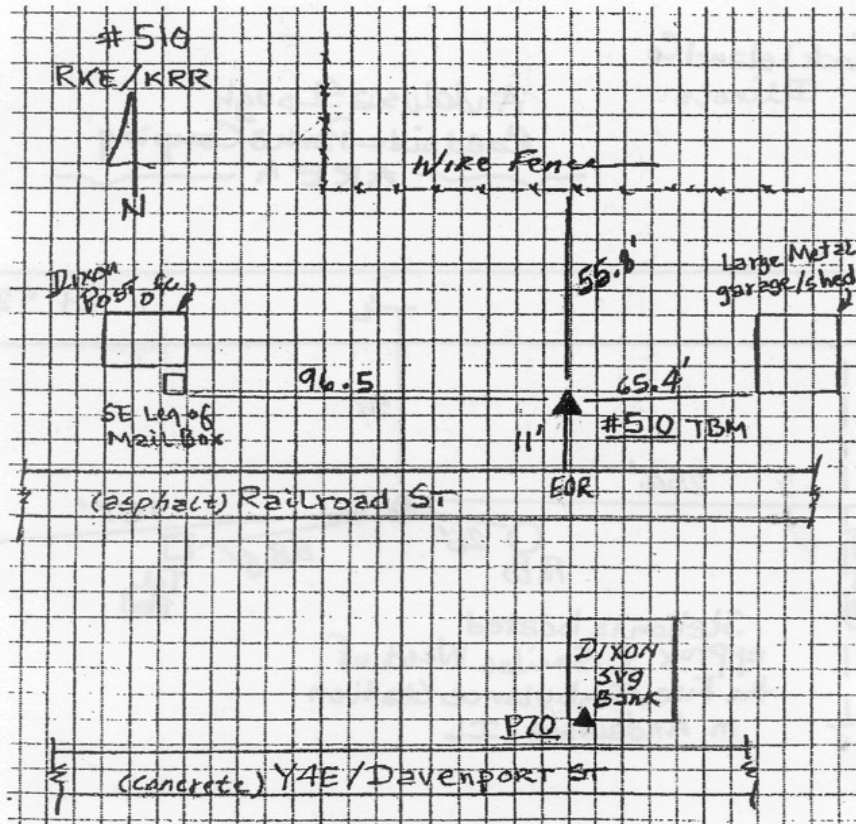
Northing: **646526.94sft**    Easting: **2382463.32sft**

Orthometric Height: **670.32sft**    Ellipsoid Height: **563.33sft**    **Geoid03**

Latitude: **41°44'33.58969"N**    Longitude: **90°46'49.94946"W**

Mapping Angle: **1°47'29"**    Combination Scale Factor: **0.999966150**

**Monument Type:** 5/8" x 30" long deformed rebar with a red survey cap driven flush with the ground surface.



*This document was prepared by DCI for use by Scott Co, Iowa.*