

Scott County, Iowa
 Iowa South Zone (1402)
 Horiz. Datum: NAD83(1996)
 Vert. Datum: NAVD 1988
 US Survey Feet
2005

Point Name: **513**

Designation: TBM set 2 blocks north of "DAVENPORT" (PID: MG0321) NGS 2nd order vertical control station.

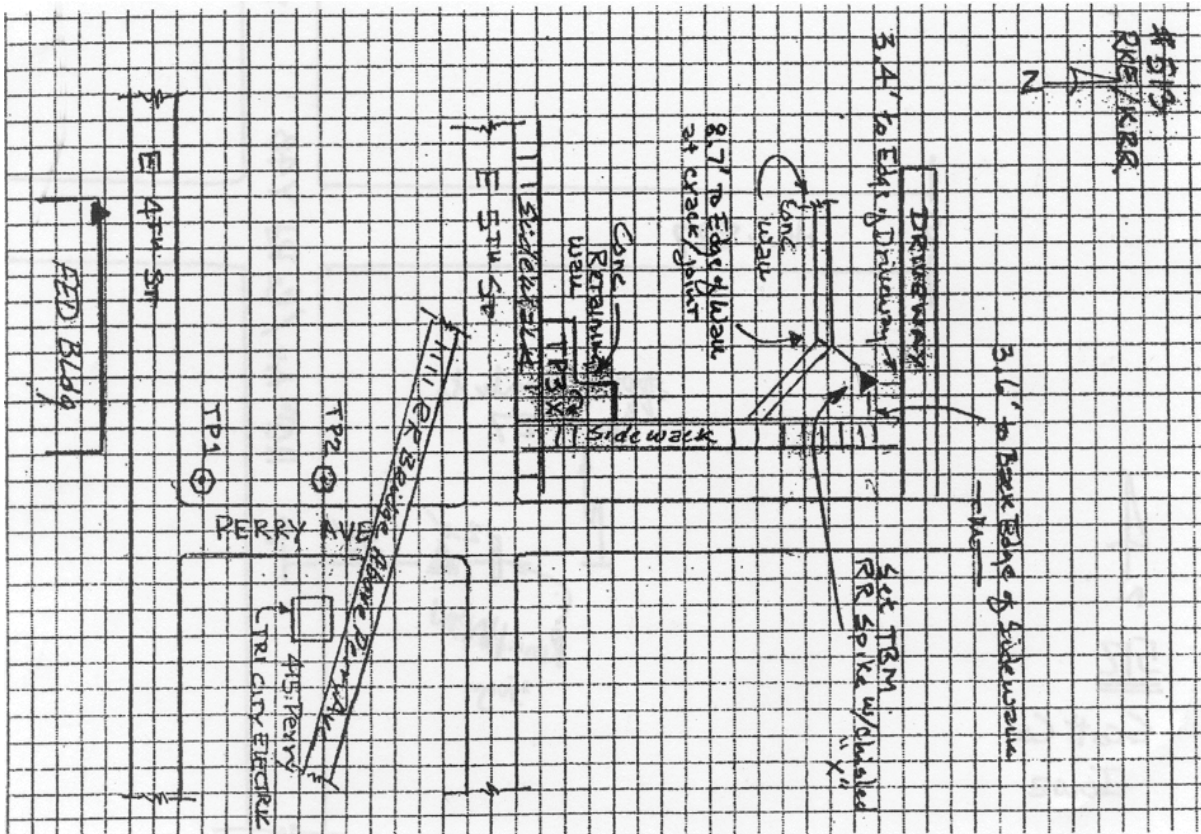
Northing: **569099.17sft** Easting: **2441802.78sft**

Orthometric Height: **598.71sft** Ellipsoid Height: **491.31sft** **Geoid03**

Latitude: **41°31'29.99867"N** Longitude: **90°34'22.00099"W**

Mapping Angle: **1°55'41"** Combination Scale Factor: **0.999940890**

Monument Type: The TBM is a railroad spike w/chisled "x" driven flush with the ground surface.



This document was prepared by DCI for use by Scott Co, Iowa.