

Scott County, Iowa
Iowa South Zone (1402)
Horiz. Datum: NAD83(1996)
Vert. Datum: NAVD 1988
US Survey Feet
2005

Point Name: **6**

Designation: CBN horizontal control station. PID: AE2145 Designation: 95-03

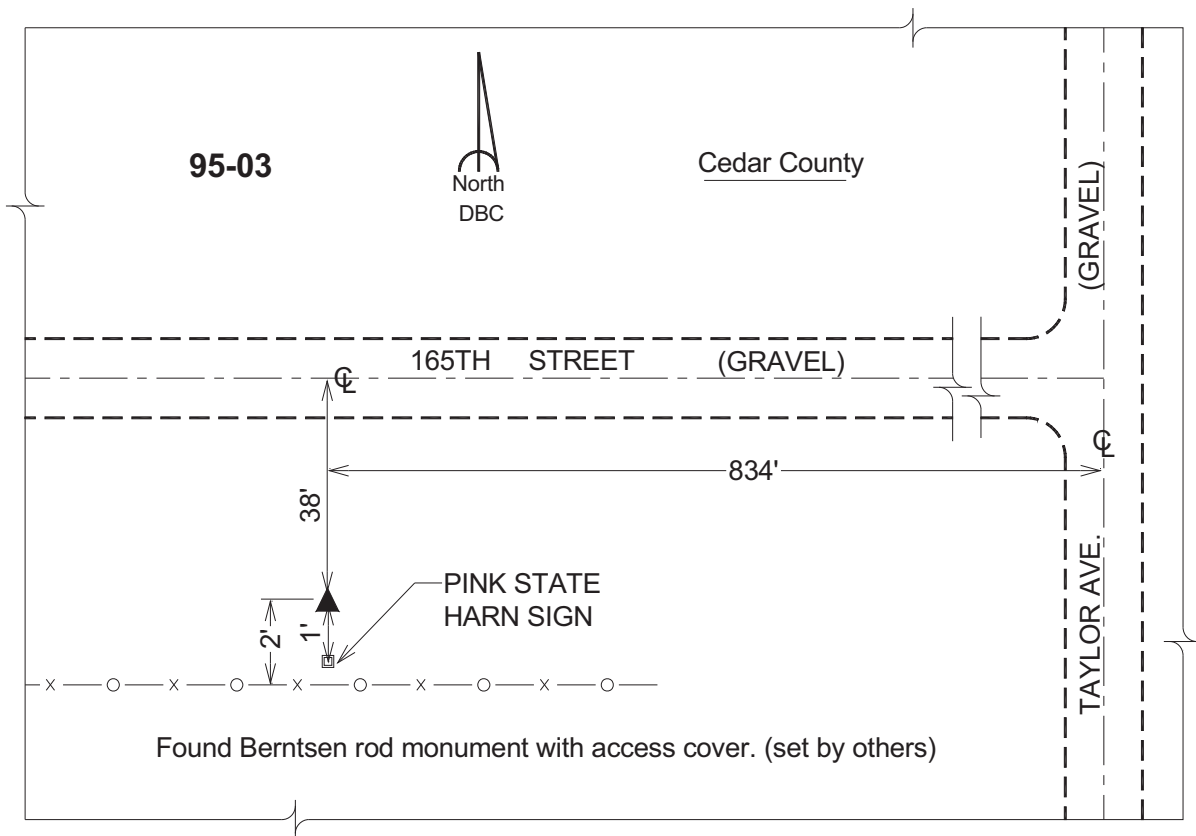
Northing: **684581.46sft** Easting: **2321835.44sft**

Orthometric Height: **828.32sft** Ellipsoid Height: **721.70sft** **Geoid03**

Latitude: **41°51'07.34243"N** Longitude: **90°59'54.93794"W**

Mapping Angle: **1°38'52"** Combination Scale Factor: **0.999978490**

Monument Type: The station monument is a Berntsen driven aluminum rod with a stamped cap, encased in a PVC pipe that was backfilled with sand and fitted with a cover.



This document was prepared by DCI for use by Scott Co, Iowa.