

Scott County, Iowa
Iowa South Zone (1402)
Horiz. Datum: NAD83(1996)
Vert. Datum: NAVD 1988
US Survey Feet
2005

Point Name: **601**

Designation: 2005-601 Scott County GPS Control Point

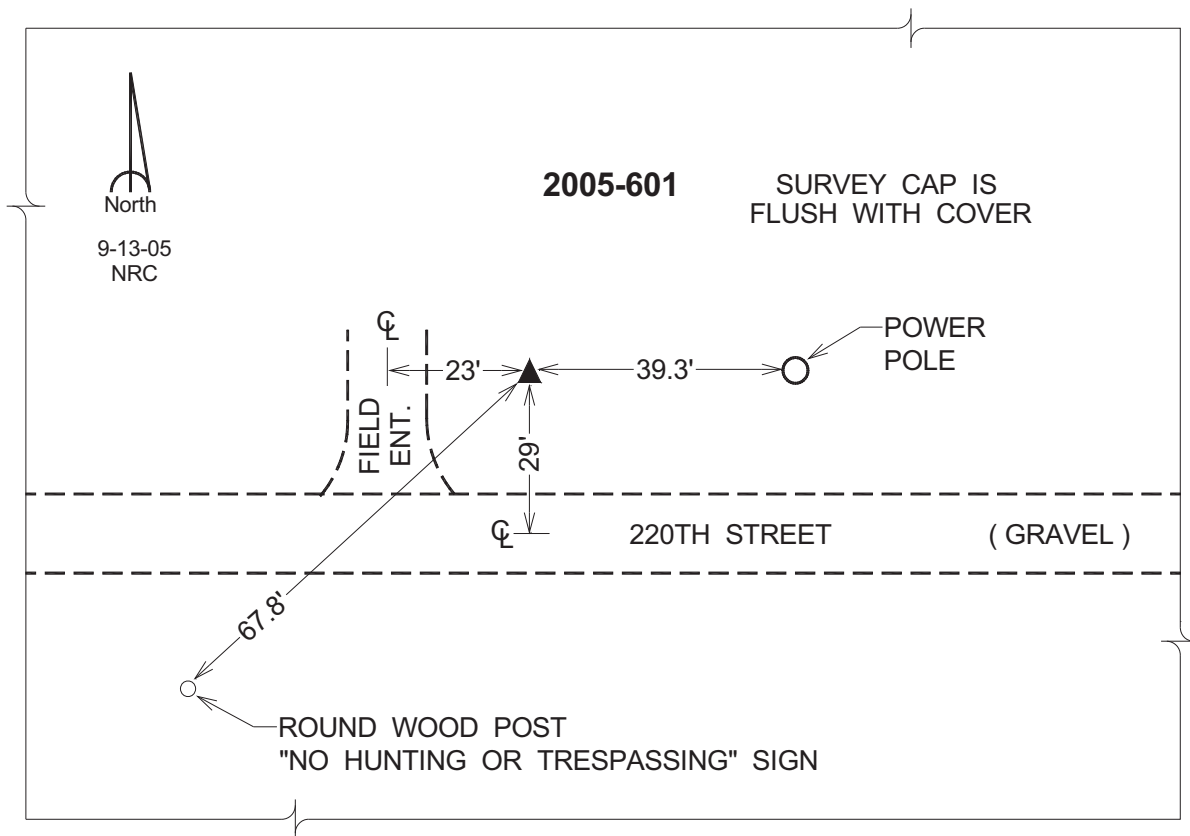
Northing: **656037.81**sft Easting: **2348166.41**sft

Orthometric Height: **757.56**sft Ellipsoid Height: **650.68**sft **Geoid03**

Latitude: **41°46'17.85630"N** Longitude: **90°54'18.42220"W**

Mapping Angle: **1°42'33"** Combination Scale Factor: **0.999966890**

Monument Type: Berntsen Top Security Rod Monument with a 2-1/2" dia. domed survey cap and permanent magnet encased in a 5" dia. PVC pipe with a NGS style aluminum access cover.



This document was prepared by DCI for use by Scott Co, Iowa.