

Scott County, Iowa
Iowa South Zone (1402)
Horiz. Datum: NAD83(1996)
Vert. Datum: NAVD 1988
US Survey Feet
2005

Point Name: **602**

Designation: 2005-602 Scott County GPS Control Point

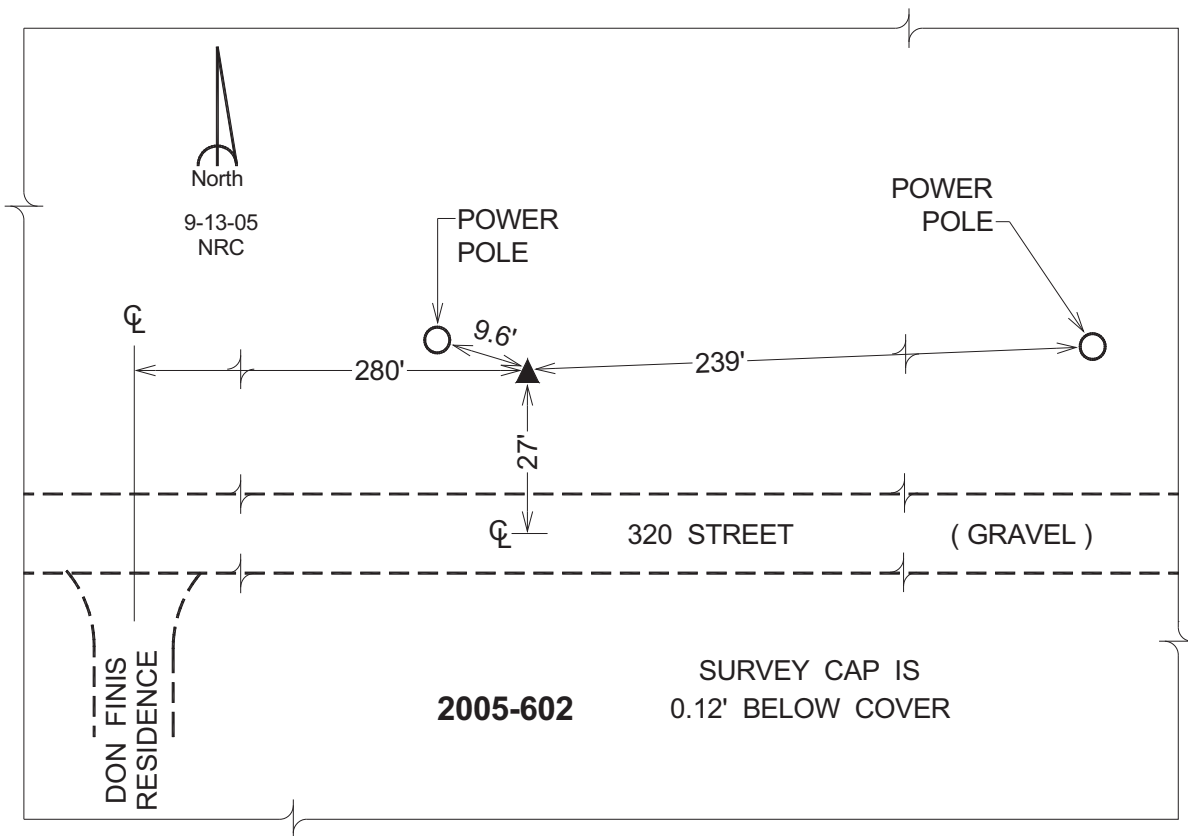
Northing: **656550.88sft** Easting: **2365341.02sft**

Orthometric Height: **706.44sft** Ellipsoid Height: **599.49sft** **Geoid03**

Latitude: **41°46'17.80046"N** Longitude: **90°50'31.66740"W**

Mapping Angle: **1°45'03"** Combination Scale Factor: **0.999969330**

Monument Type: Berntsen Top Security Rod Monument with a 2-1/2" dia. domed survey cap and permanent magnet encased in a 5" dia. PVC pipe with a NGS style aluminum access cover.



This document was prepared by DCI for use by Scott Co, Iowa.