

Scott County, Iowa
Iowa South Zone (1402)
Horiz. Datum: NAD83(1996)
Vert. Datum: NAVD 1988
US Survey Feet
2005

Point Name: **603**

Designation: 2005-603 Scott County GPS Control Point

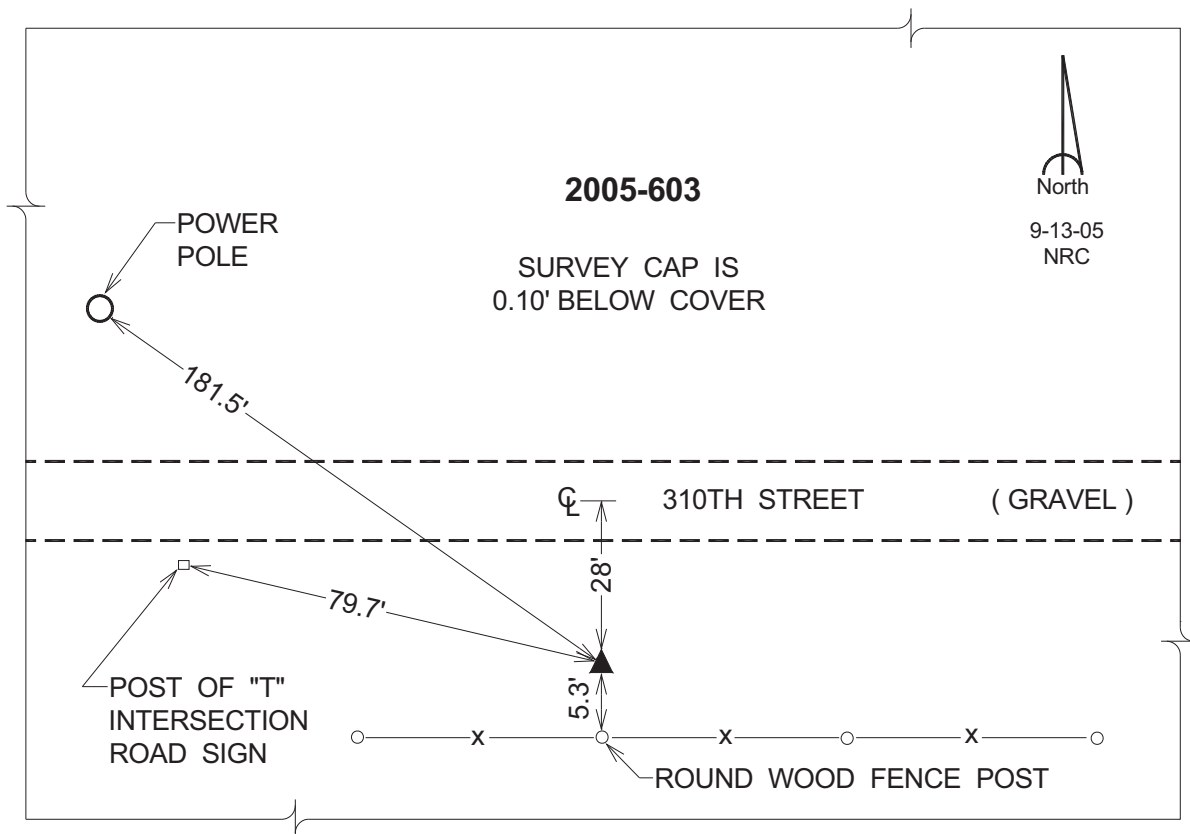
Northing: **651441.17sft** Easting: **2379851.72sft**

Orthometric Height: **742.58sft** Ellipsoid Height: **635.60sft** **Geoid03**

Latitude: **41°45'22.92085"N** Longitude: **90°47'22.36323"W**

Mapping Angle: **1°47'07"** Combination Scale Factor: **0.999965000**

Monument Type: Berntsen Top Security Rod Monument with a 2-1/2" dia. domed survey cap and permanent magnet encased in a 5" dia. PVC pipe with a NGS style aluminum access cover.



This document was prepared by DCI for use by Scott Co, Iowa.