

Scott County, Iowa
Iowa South Zone (1402)
Horiz. Datum: NAD83(1996)
Vert. Datum: NAVD 1988
US Survey Feet
2005

Point Name: **604**

Designation: 2005-604 Scott County GPS Control Point

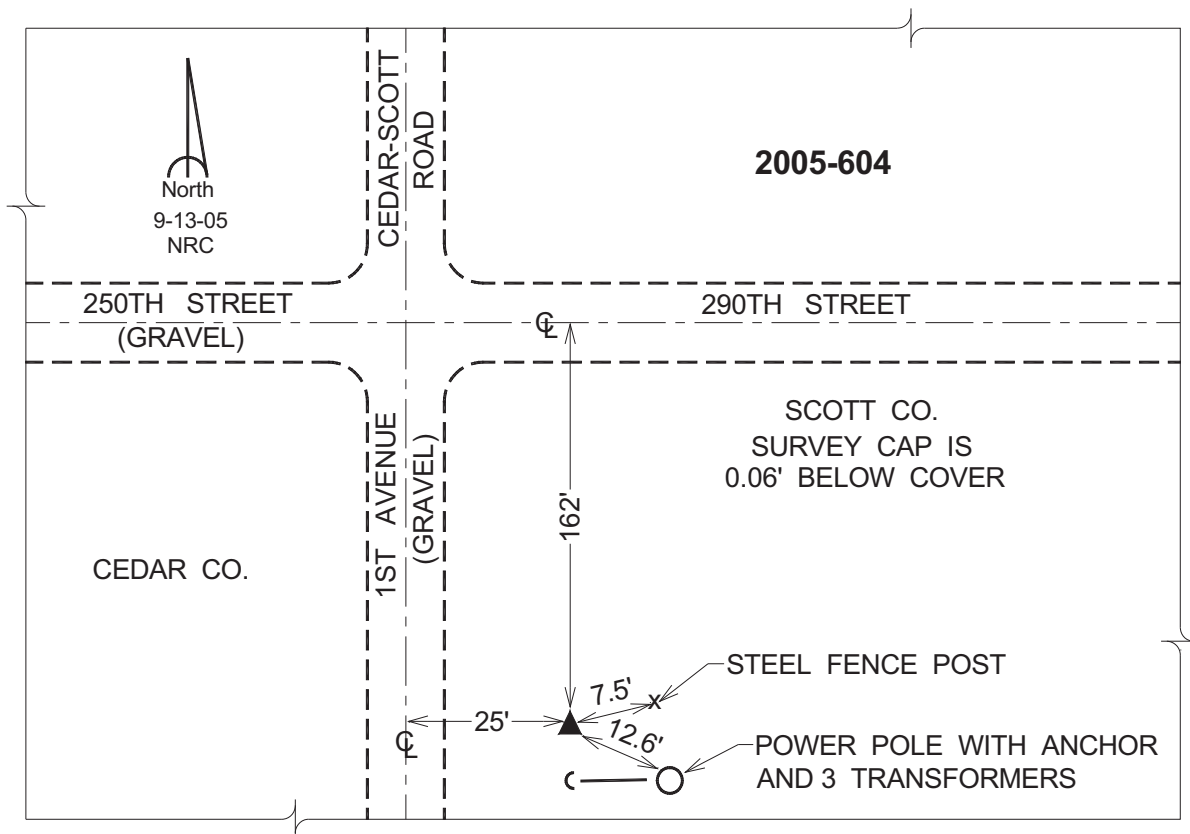
Northing: **639982.97sft** Easting: **2350413.12sft**

Orthometric Height: **797.78sft** Ellipsoid Height: **690.82sft** **Geoid03**

Latitude: **41°43'38.65211"N** Longitude: **90°53'55.12107"W**

Mapping Angle: **1°42'49"** Combination Scale Factor: **0.999957590**

Monument Type: Berntsen Top Security Rod Monument with a 2-1/2" dia. domed survey cap and permanent magnet encased in a 5" dia. PVC pipe with a NGS style aluminum access cover.



This document was prepared by DCI for use by Scott Co, Iowa.