

Scott County, Iowa
Iowa South Zone (1402)
Horiz. Datum: NAD83(1996)
Vert. Datum: NAVD 1988
US Survey Feet
2005

Point Name: **605**

Designation: 2005-605 Scott County GPS Control Point

Northing: **641219.92sft** Easting: **2366253.22sft**

Orthometric Height: **775.51sft** Ellipsoid Height: **668.52sft** **Geoid03**

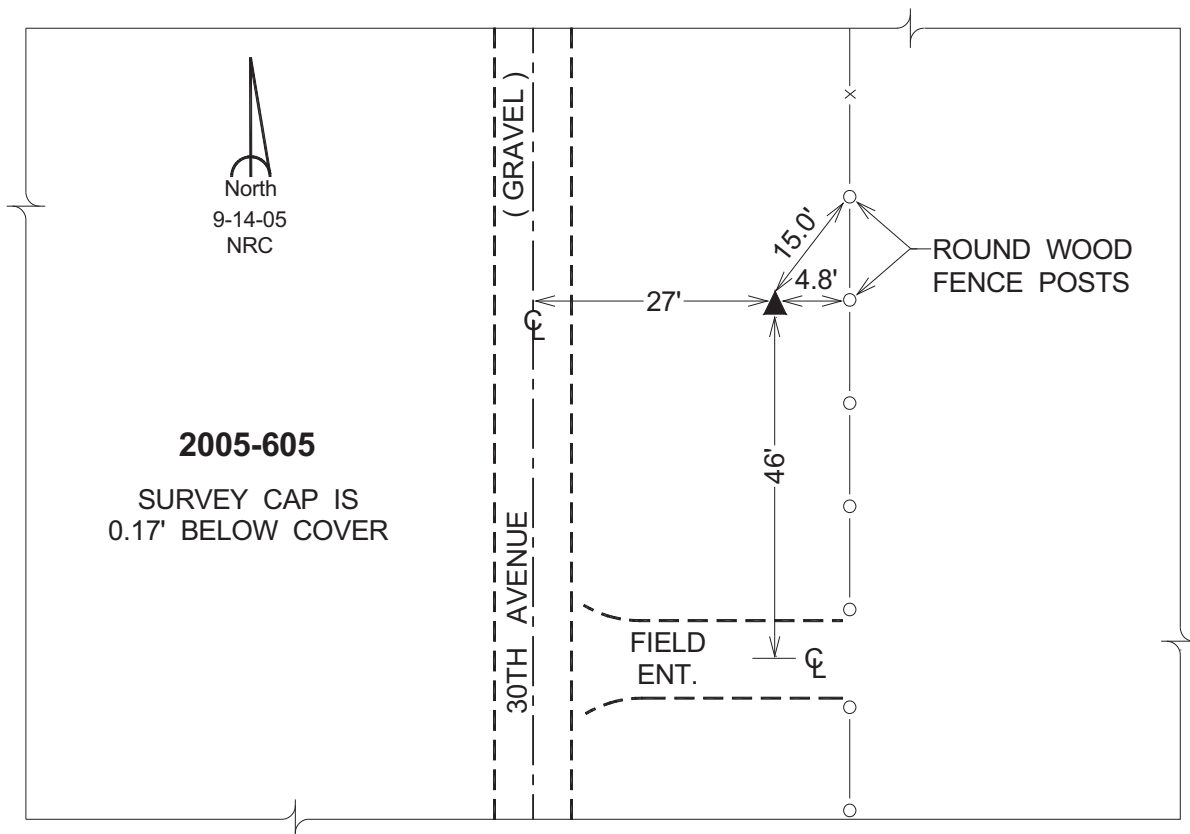
Latitude: **41°43'46.13530"N**

Longitude: **90°50'25.81971"W**

Mapping Angle: **1°45'07"**

Combination Scale Factor: **0.999958980**

Monument Type: Berntsen Top Security Rod Monument with a 2-1/2" dia. domed survey cap and permanent magnet encased in a 5" dia. PVC pipe with a NGS style aluminum access cover.



This document was prepared by DCI for use by Scott Co, Iowa.