

Scott County, Iowa
Iowa South Zone (1402)
Horiz. Datum: NAD83(1996)
Vert. Datum: NAVD 1988
US Survey Feet
2005

Point Name: **606**

Designation: 2005-606 Scott County GPS Control Point

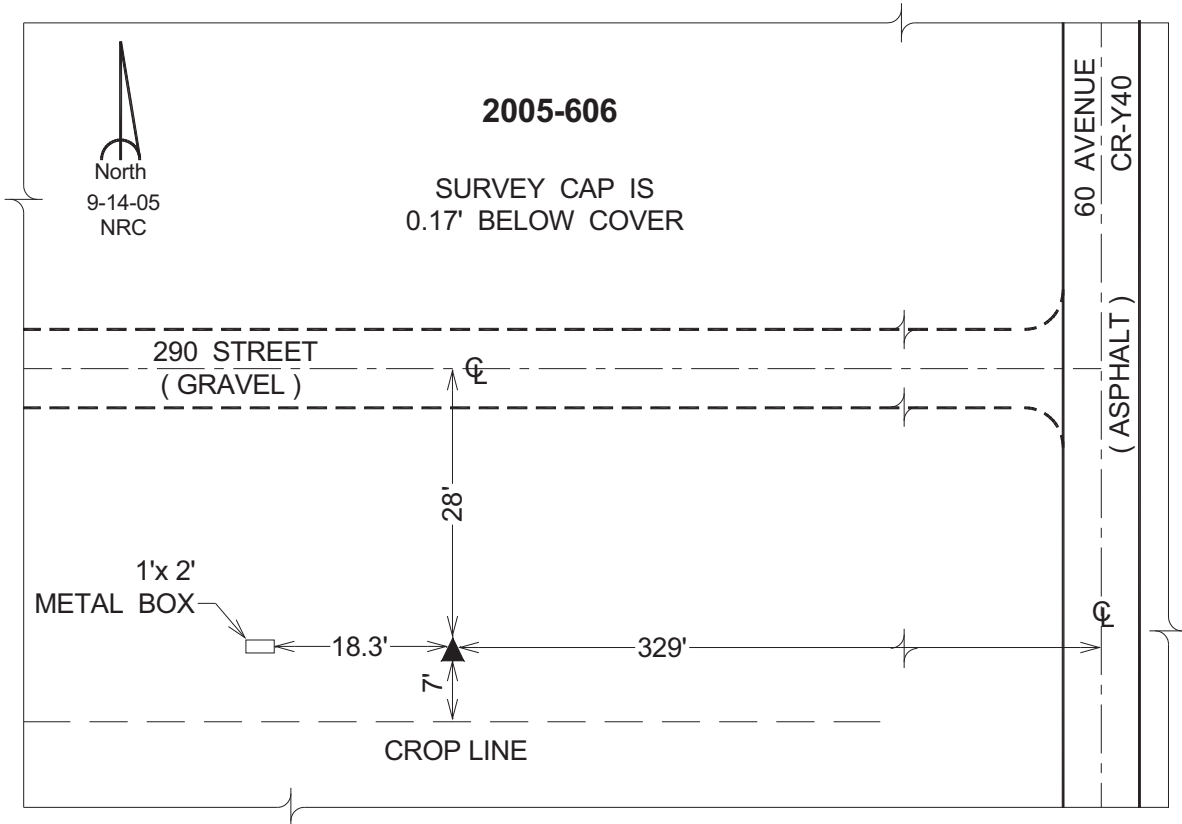
Northing: **640901.79sft** Easting: **2381796.16sft**

Orthometric Height: **719.85sft** Ellipsoid Height: **612.82sft** **Geoid03**

Latitude: **41°43'38.24936"N** Longitude: **90°47'01.06267"W**

Mapping Angle: **1°47'21"** Combination Scale Factor: **0.999961290**

Monument Type: Berntsen Top Security Rod Monument with a 2-1/2" dia. domed survey cap and permanent magnet encased in a 5" dia. PVC pipe with a NGS style aluminum access cover.



This document was prepared by DCI for use by Scott Co, Iowa.