

Scott County, Iowa
Iowa South Zone (1402)
Horiz. Datum: NAD83(1996)
Vert. Datum: NAVD 1988
US Survey Feet
2005

Point Name: **607**

Designation: 2005-607 Scott County GPS Control Point

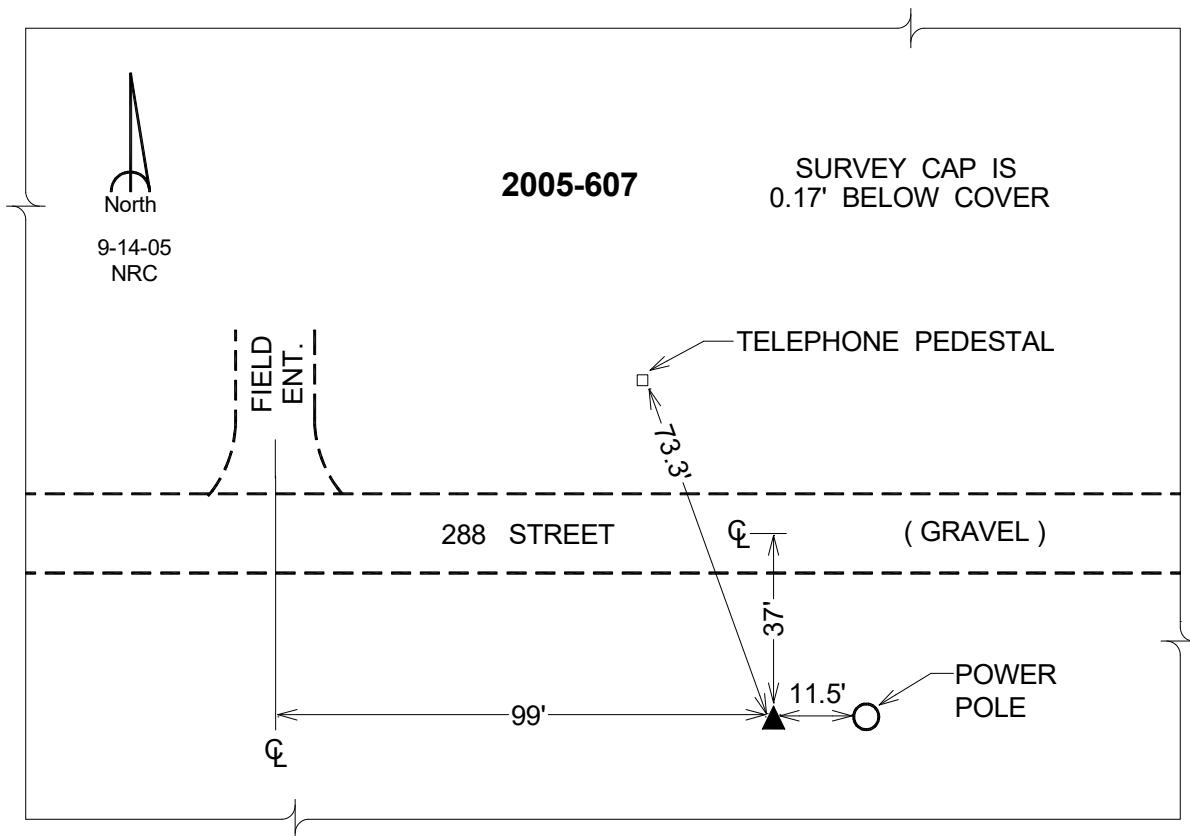
Northing: **640045.24sft** Easting: **2397114.00sft**

Orthometric Height: **645.27sft** Ellipsoid Height: **538.14sft** **Geoid03**

Latitude: **41°43'25.01756"N** Longitude: **90°43'39.51292"W**

Mapping Angle: **1°49'34"** Combination Scale Factor: **0.999964260**

Monument Type: Berntsen Top Security Rod Monument with a 2-1/2" dia. domed survey cap and permanent magnet encased in a 5" dia. PVC pipe with a NGS style aluminum access cover.



This document was prepared by DCI for use by Scott Co, Iowa.