

**Scott County, Iowa**  
Iowa South Zone (1402)  
Horiz. Datum: NAD83(1996)  
Vert. Datum: NAVD 1988  
US Survey Feet  
**2005**

Point Name: **608**

**Designation:** 2005-608 Scott County GPS Control Point

Northing: **642630.88sft**    Easting: **2413999.71sft**

Orthometric Height: **710.28sft**    Ellipsoid Height: **603.06sft**    **Geoid03**

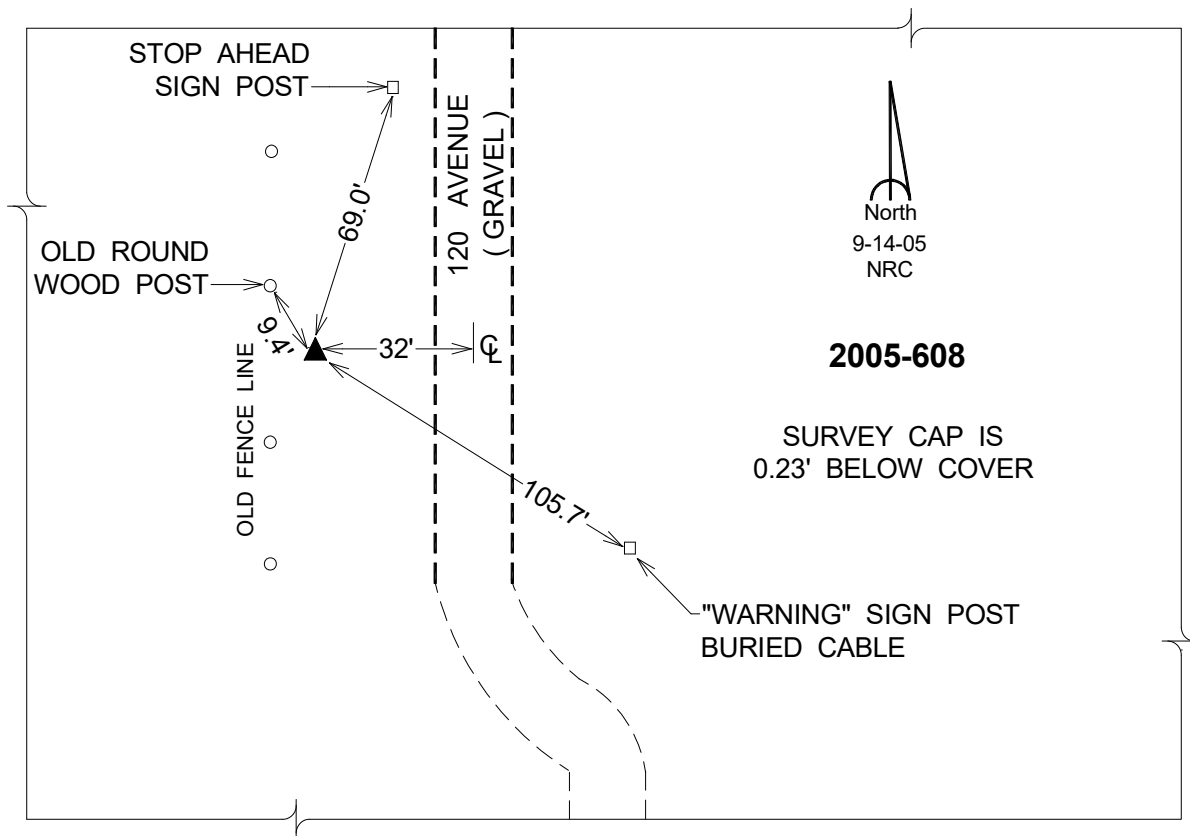
Latitude: **41°43'45.17337"N**

Longitude: **90°39'55.84318"W**

Mapping Angle: **1°52'01"**

Combination Scale Factor: **0.999962060**

**Monument Type:** Berntsen Top Security Rod Monument with a 2-1/2" dia. domed survey cap and permanent magnet encased in a 5" dia. PVC pipe with a NGS style aluminum access cover.



*This document was prepared by DCI for use by Scott Co, Iowa.*