

**Scott County, Iowa**  
Iowa South Zone (1402)  
Horiz. Datum: NAD83(1996)  
Vert. Datum: NAVD 1988  
US Survey Feet  
**2005**

Point Name: **609**

**Designation:** 2005-609 Scott County GPS Control Point

Northing: **649119.57**sft    Easting: **2427115.95**sft

Orthometric Height: **681.77**sft    Ellipsoid Height: **574.47**sft    **Geoid03**

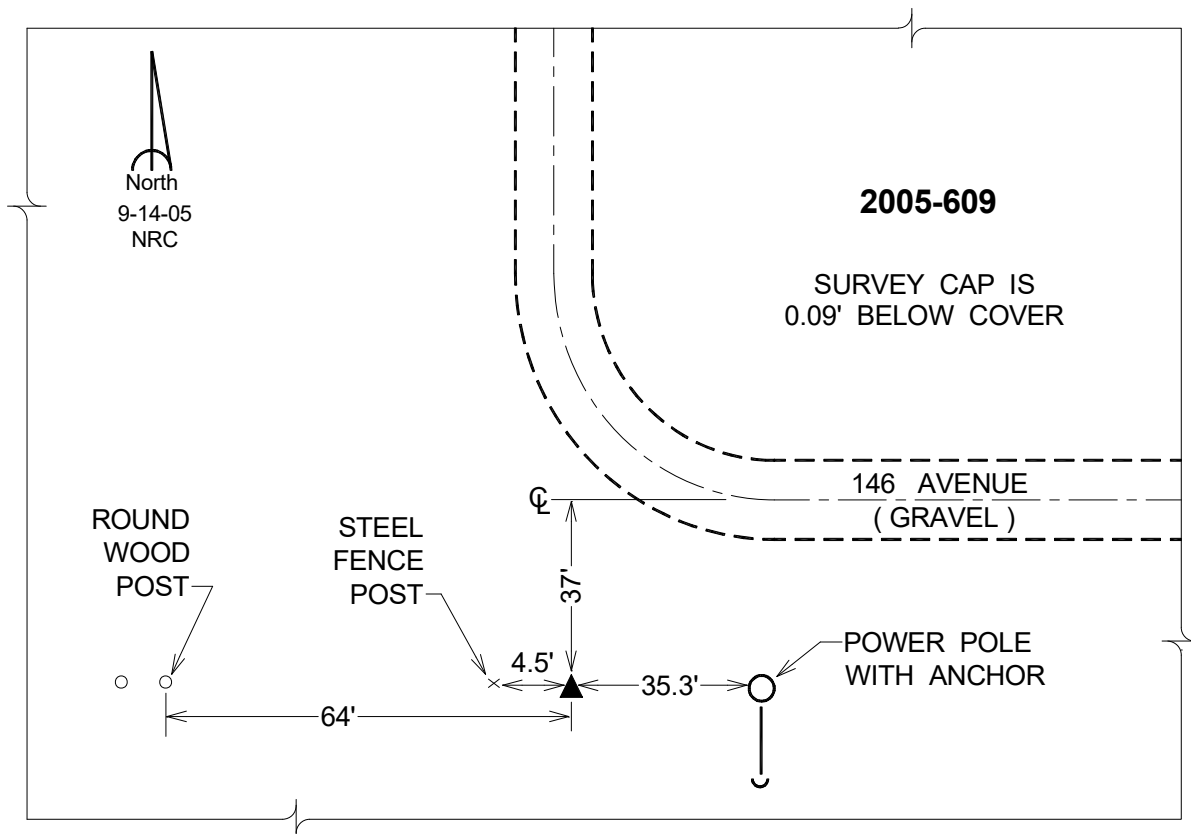
Latitude: **41°44'44.98513"N**

Longitude: **90°37'00.11933"W**

Mapping Angle: **1°53'57"**

Combination Scale Factor: **0.999966140**

**Monument Type:** Berntsen Top Security Rod Monument with a 2-1/2" dia. domed survey cap and permanent magnet encased in a 5" dia. PVC pipe with a NGS style aluminum access cover.



*This document was prepared by DCI for use by Scott Co, Iowa.*