

Scott County, Iowa
Iowa South Zone (1402)
Horiz. Datum: NAD83(1996)
Vert. Datum: NAVD 1988
US Survey Feet
2005

Point Name: **610**

Designation: 2005-610 Scott County GPS Control Point

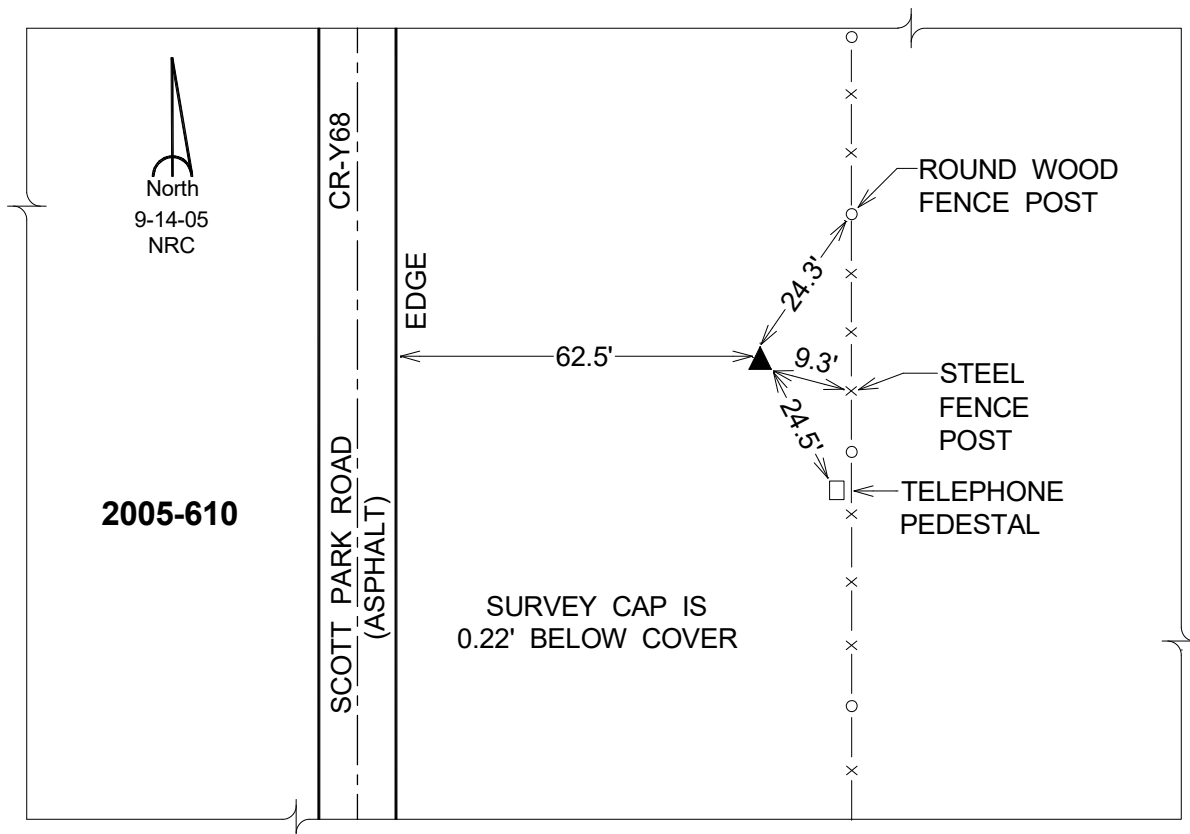
Northing: **648973.85**sft Easting: **2448749.46**sft

Orthometric Height: **673.75**sft Ellipsoid Height: **566.27**sft **Geoid03**

Latitude: **41°44'36.36575"N** Longitude: **90°32'14.96534"W**

Mapping Angle: **1°57'05"** Combination Scale Factor: **0.999966140**

Monument Type: Berntsen Top Security Rod Monument with a 2-1/2" dia. domed survey cap and permanent magnet encased in a 5" dia. PVC pipe with a NGS style aluminum access cover.



This document was prepared by DCI for use by Scott Co, Iowa.