

**Scott County, Iowa**  
Iowa South Zone (1402)  
Horiz. Datum: NAD83(1996)  
Vert. Datum: NAVD 1988  
US Survey Feet  
**2005**

Point Name: **611**

**Designation:** 2005-611 Scott County GPS Control Point

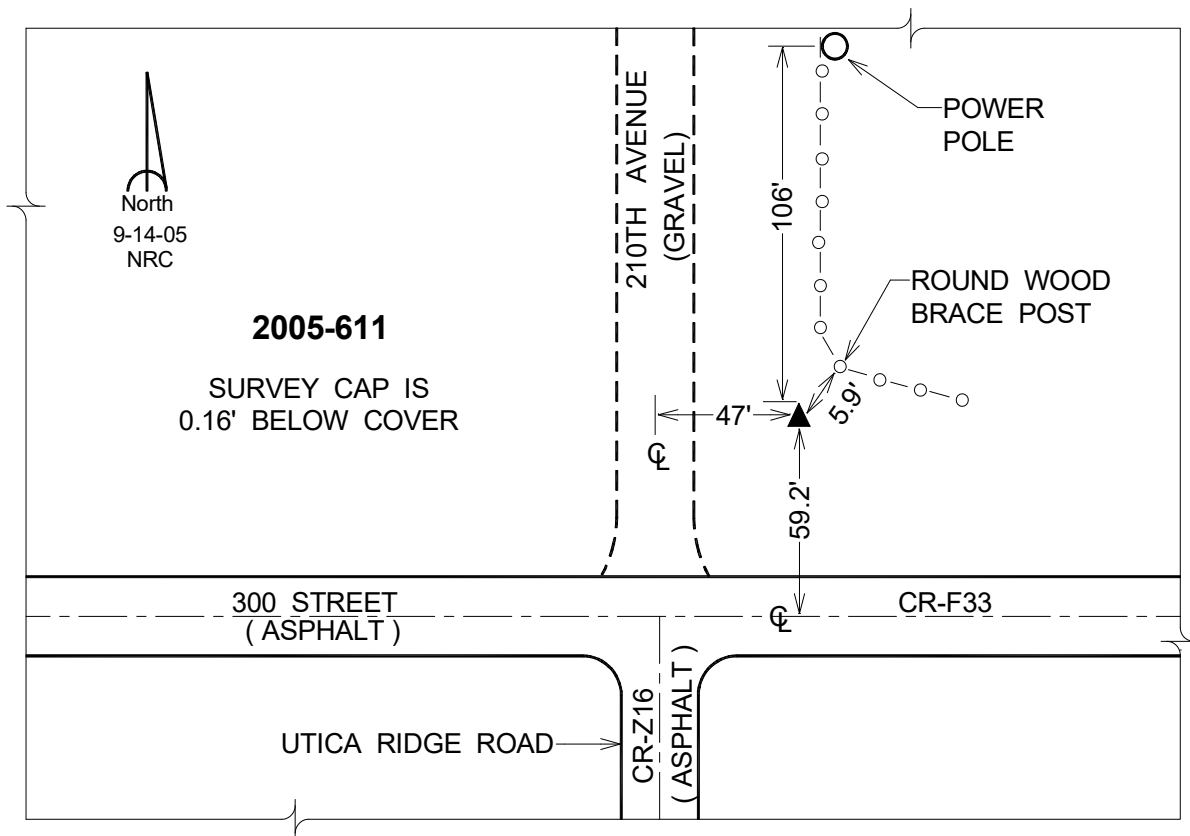
Northing: **649122.25**sft    Easting: **2461574.34**sft

Orthometric Height: **613.34**sft    Ellipsoid Height: **505.74**sft    **Geoid03**

Latitude: **41°44'33.48228"N**                      Longitude: **90°29'25.82183"W**

Mapping Angle: **1°58'56"**                      Combination Scale Factor: **0.999968890**

**Monument Type:** Berntsen Top Security Rod Monument with a 2-1/2" dia. domed survey cap and permanent magnet encased in a 5" dia. PVC pipe with a NGS style aluminum access cover.



*This document was prepared by DCI for use by Scott Co, Iowa.*